

Phospho-CRMP2/DPYSL2-T514 Antibody

CABP0821

Description

This Phospho-CRMP2/DPYSL2-T514 Antibody is supplied as a kit for advanced applications. The kit includes Bradford Reagent to quantify total protein concentration for accurate sample normalization (Optional).

Product Information

SKU:	CABP0821
Contents:	20 μ L, 100 μ L Bradford Reagent: 1 vial (2ml)
Category:	Polyclonal Antibody
Synonyms:	DRP2, N2A3, CRMP2, DRP-2, ULIP2, CRMP-2, DHPRP2, ULIP-2, Phospho-CRMP2/DPYSL2-T514
Clone:	-
Applications:	WB ELISA
Conjugation:	Unconjugated
Reactivity:	Human, Mouse, Rat

Antibody Data

Gene ID:	1808
Uniprot:	AB_2771034
Host Species:	Rabbit
Purification:	Affinity purification
Observed MW:	69kDa
Calculated MW:	62kDa

Preparation & Storage

Storage: Store at -20°C. Avoid freeze / thaw cycles. Buffer: PBS with 0.01% thimerosal, 50% glycerol, pH 7.3.

Store Bradford Reagent at Room Temperature for 1 Year.

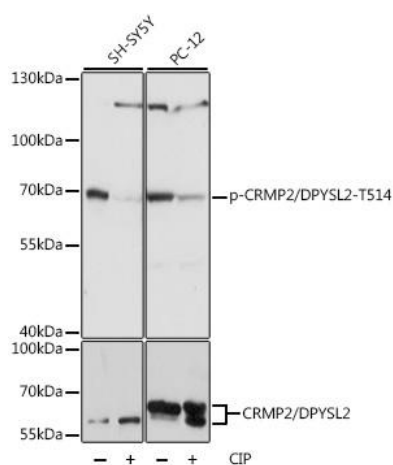
Positive Sample: SH-SY5Y, PC-12

Recommended Dilutions:

WB	1:500 - 1:2000
ELISA	Recommended starting concentration is 1 µg/mL. Please optimize the concentration based on your specific assay requirements.

Protein Quantification (Optional): To quantify total protein levels, use the Bradford Reagent included in this kit. Visit <https://www.assaygenie.com/bradford-protein-assay-protocol/> to view the full protocol

Validation Data



Western blot analysis of various lysates using Phospho-CRMP2/DPYSL2- Rabbit pAb (CABP0821) at 1:1000 dilution or CRMP2/DPYSL2 antibody (CAB14570). SH-SY5Y cells were treated by CIP(20uL/400ul) at 37°C for 1 hour. PC-12 cells were treated by CIP(20uL/400ul) at 37°C for 1 hour. Secondary antibody: HRP-conjugated Goat anti-Rabbit IgG (H+L) (CABS014) at 1:10000 dilution. Lysates/proteins: 25µg per lane. Blocking buffer: 3% BSA. Detection: ECL Basic Kit (AbGn00020). Exposure time: 1s.