

Phospho-PLC gamma 1 (PLCG1)-S1248 Antibody

CABP0827

Description

This Phospho-PLC gamma 1 (PLCG1)-S1248 Antibody is supplied as a kit for advanced applications. The kit includes Bradford Reagent to quantify total protein concentration for accurate sample normalization (Optional).

Product Information

SKU:	CABP0827
Contents:	20 µL, 100 µL Bradford Reagent: 1 vial (2ml)
Category:	Polyclonal Antibody
Synonyms:	PLC1, NCKAP3, PLC-II, PLC148, PLCgamma1, Phospho-PLC gamma 1 (PLCG1)-S1248
Clone:	-
Applications:	WB IHC-P ELISA
Conjugation:	Unconjugated
Reactivity:	Human, Mouse, Rat

Antibody Data

Gene ID:	5335
Uniprot:	AB_2771432
Host Species:	Rabbit
Purification:	Affinity purification
Observed MW:	149kDa
Calculated MW:	149kDa

Preparation & Storage

Storage: Store at -20°C. Avoid freeze / thaw cycles. Buffer: PBS with 0.09% Sodium azide, 50% glycerol, pH 7.3.

Store Bradford Reagent at Room Temperature for 1 Year.

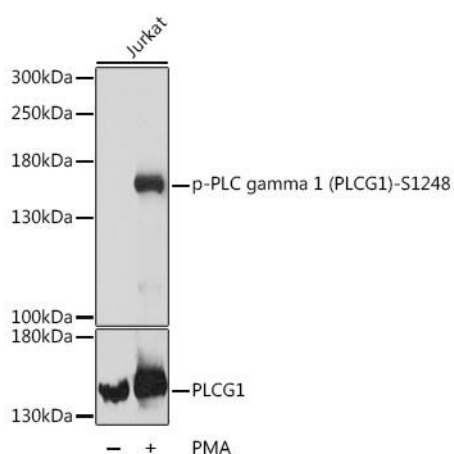
Positive Sample: Jurkat treated with PMA

Recommended Dilutions:

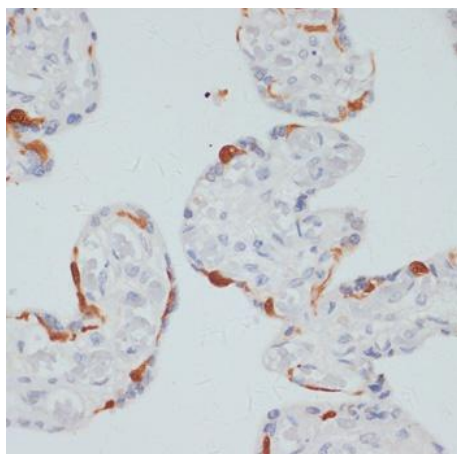
WB	1:500 - 1:2000
IHC-P	1:10 - 1:100
ELISA	Recommended starting concentration is 1 µg/mL. Please optimize the concentration based on your specific assay requirements.

Protein Quantification (Optional): To quantify total protein levels, use the Bradford Reagent included in this kit. Visit <https://www.assaygenie.com/bradford-protein-assay-protocol/> to view the full protocol

Validation Data



Western blot analysis of lysates from Jurkat cells, using Phospho-PLC gamma 1 (PLCG1)- Rabbit pAb (CABP0827) at dilution or PLC gamma 1 (PLCG1) antibody (CAB15704). Jurkat cells were treated with PMA/TPA (200 nM) at 37°C for 10 minutes. Secondary antibody: HRP-conjugated Goat anti-Rabbit IgG (H+L) (CABS014) at 1:10000 dilution. Lysates/proteins: 25µg per lane. Blocking buffer: 3% BSA. Detection: ECL Basic Kit (AbGn00020). Exposure time: 90s.



Immunohistochemistry analysis of paraffin-embedded Human placenta using Phospho-PLC gamma 1 (PLCG1)- Rabbit pAb (CABP0827) at dilution of 1:100 (40x lens). Microwave antigen retrieval performed with 0.01M Tris/EDTA Buffer (pH 9.0) prior to IHC staining.

