

## Phospho-Histone H3-S28 Antibody

CABP0839

### Description

---

This Phospho-Histone H3-S28 Antibody is supplied as a kit for advanced applications. The kit includes Bradford Reagent to quantify total protein concentration for accurate sample normalization (Optional).

### Product Information

---

<b>SKU:</b>	CABP0839
<b>Contents:</b>	20 $\mu$ L, 100 $\mu$ L Bradford Reagent: 1 vial (2ml)
<b>Category:</b>	Polyclonal Antibody
<b>Synonyms:</b>	H3/A, H3C2, H3C3, H3C4, H3C6, H3C7, H3C8, H3FA, H3C10, H3C11, H3C12, HIST1H3A, Phospho-Histone H3-S28
<b>Clone:</b>	-
<b>Applications:</b>	<span>WB</span> <span>IF/ICC</span> <span>ELISA</span>
<b>Conjugation:</b>	Unconjugated
<b>Reactivity:</b>	Human, Mouse, Rat, Other (Wide Range Predicted)

### Antibody Data

---

<b>Gene ID:</b>	8290 8350
<b>Uniprot:</b>	AB_2771173
<b>Host Species:</b>	Rabbit
<b>Purification:</b>	Affinity purification
<b>Observed MW:</b>	17 kDa
<b>Calculated MW:</b>	15 kDa

## Preparation & Storage

**Storage:** Store at -20°C. Avoid freeze / thaw cycles. Buffer: PBS containing 50% glycerol, preserved with proclin300 or sodium azide (as specified on the Certificate of Analysis), pH 7.3.

Store Bradford Reagent at Room Temperature for 1 Year.

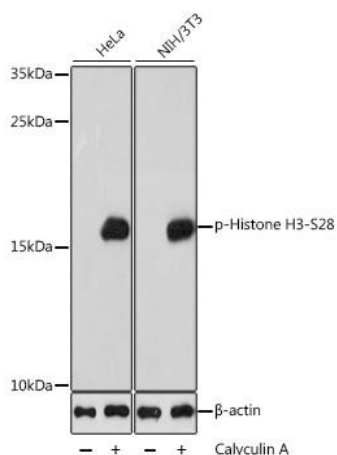
**Positive Sample:** HeLa treated with Calyculin A, NIH/3T3 treated with Calyculin A, C6 treated with Calyculin A

**Recommended Dilutions:**

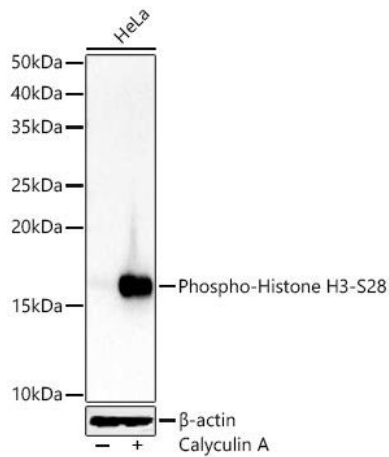
<b>WB</b>	1:500 - 1:2000
<b>IF/ICC</b>	1:50 - 1:200
<b>ELISA</b>	Recommended starting concentration is 1 µg/mL. Please optimize the concentration based on your specific assay requirements.

**Protein Quantification (Optional):** To quantify total protein levels, use the Bradford Reagent included in this kit. Visit <https://www.assaygenie.com/bradford-protein-assay-protocol/> to view the full protocol

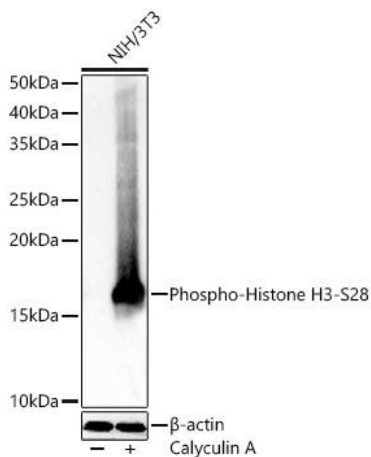
## Validation Data



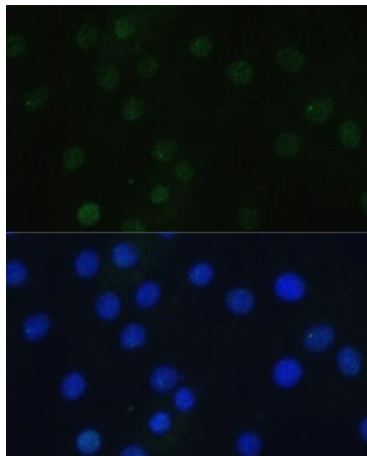
Western blot analysis of various lysates using Phospho-Histone - Rabbit pAb (CABP0839) at 1:1000 dilution. Both HeLa cells and NIH/3T3 cells were treated with Calyculin A (100 nM) at 37°C for 30 minutes after serum-starvation overnight. Secondary antibody: HRP-conjugated Goat anti-Rabbit IgG (H+L) (CABS014) at 1:10000 dilution. Lysates/proteins: 25µg per lane. Blocking buffer: 3% BSA. Detection: ECL Basic Kit (AbGn00020). Exposure time: 1s.



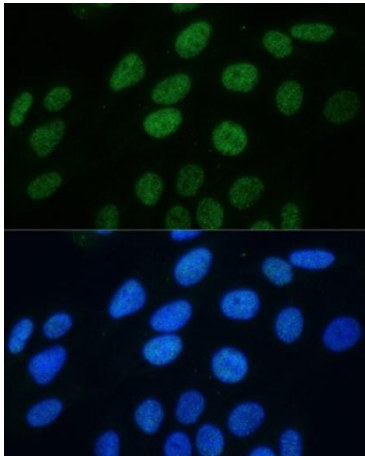
Western blot analysis of lysates from HeLa cells, using Phospho-Histone - Rabbit pAb (CABP0839) at 1:900 dilution. HeLa cells were treated with Calyculin A (100 nM) at 37°C for 30 minutes after serum-starvation overnight. Secondary antibody: HRP-conjugated Goat anti-Rabbit IgG (H+L) (CABS014) at 1:10000 dilution. Lysates/proteins: 25µg per lane. Blocking buffer: 3% nonfat dry milk in TBST. Detection: ECL Basic Kit (AbGn00020). Exposure time: 10s.



Western blot analysis of lysates from NIH/3T3 cells, using Phospho-Histone - Rabbit pAb (CABP0839) at 1:900 dilution. NIH/3T3 cells were treated with Calyculin A (100 nM) at 37°C for 30 minutes after serum-starvation overnight. Secondary antibody: HRP-conjugated Goat anti-Rabbit IgG (H+L) (CABS014) at 1:10000 dilution. Lysates/proteins: 25µg per lane. Blocking buffer: 3% nonfat dry milk in TBST. Detection: ECL Basic Kit (AbGn00020). Exposure time: 0.5s.



Immunofluorescence analysis of H9C2 cells using Phospho-Histone - Rabbit pAb (CABP0839) at dilution of 1:100. Blue: DAPI for nuclear staining.



Immunofluorescence analysis of U2OS cells using Phospho-Histone - Rabbit pAb (CABP0839) at dilution of 1:100. Blue: DAPI for nuclear staining.