

Phospho-PPP2CA/PPP2CB-Y307 Antibody

CABP0927

Description

This Phospho-PPP2CA/PPP2CB-Y307 Antibody is supplied as a kit for advanced applications. The kit includes Bradford Reagent to quantify total protein concentration for accurate sample normalization (Optional).

Product Information

SKU:	CABP0927
Contents:	20 µL, 100 µL Bradford Reagent: 1 vial (2ml)
Category:	Polyclonal Antibody
Synonyms:	PPP2CA/PPP2CB, Phospho-PPP2CA/PPP2CB-Y307
Clone:	-
Applications:	WB ELISA
Conjugation:	-
Reactivity:	Human, Mouse

Antibody Data

Gene ID:	5515 5516
Uniprot:	AB_2863839
Host Species:	Rabbit
Purification:	Affinity purification
Observed MW:	38kDa
Calculated MW:	-

Preparation & Storage

Storage: Store at -20°C. Avoid freeze / thaw cycles. Buffer: PBS with 0.01% thimerosal, 50% glycerol, pH 7.3.

Store Bradford Reagent at Room Temperature for 1 Year.

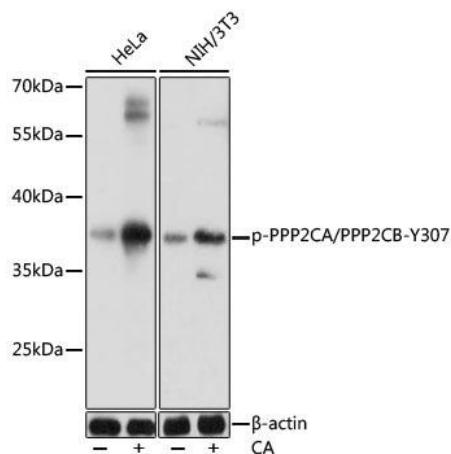
Positive Sample: HeLa treated with Calyculin A, NIH/3T3 treated with Calyculin A

Recommended Dilutions:

WB	1:500 - 1:2000
ELISA	Recommended starting concentration is 1 µg/mL. Please optimize the concentration based on your specific assay requirements.

Protein Quantification (Optional): To quantify total protein levels, use the Bradford Reagent included in this kit. Visit <https://www.assaygenie.com/bradford-protein-assay-protocol/> to view the full protocol

Validation Data



Western blot analysis of various lysates using Phospho-PPP2CA/PPP2CB- Rabbit pAb (CABP0927) at 1:1000 dilution. HeLa cells were treated with Calyculin A (100nM) for 30 minutes after serum-starvation overnight. NIH/3T3 cells were treated with Calyculin A (100nM) for 30 minutes after serum-starvation overnight. Secondary antibody: HRP-conjugated Goat anti-Rabbit IgG (H+L) (CABS014) at 1:10000 dilution. Lysates/proteins: 25µg per lane. Blocking buffer: 3% BSA. Detection: ECL Basic Kit (AbGn00020). Exposure time: 1s.