

Phospho-SMO-S616 Antibody

CABP0938

Description

This Phospho-SMO-S616 Antibody is supplied as a kit for advanced applications. The kit includes Bradford Reagent to quantify total protein concentration for accurate sample normalization (Optional).

Product Information

SKU:	CABP0938
Contents:	20 μ L, 100 μ L Bradford Reagent: 1 vial (2ml)
Category:	Polyclonal Antibody
Synonyms:	Gx, CRJS, PHLS, SMOH, FZD11, Phospho-SMO-S616
Clone:	-
Applications:	WB ELISA DB
Conjugation:	Unconjugated
Reactivity:	Human

Antibody Data

Gene ID:	6608
Uniprot:	AB_2863850
Host Species:	Rabbit
Purification:	Affinity purification
Observed MW:	Refer to figures
Calculated MW:	86kDa

Preparation & Storage

Storage: Store at -20°C. Avoid freeze / thaw cycles. Buffer: PBS with 0.01% thimerosal, 50% glycerol, pH 7.3.

Store Bradford Reagent at Room Temperature for 1 Year.

Positive Sample: -

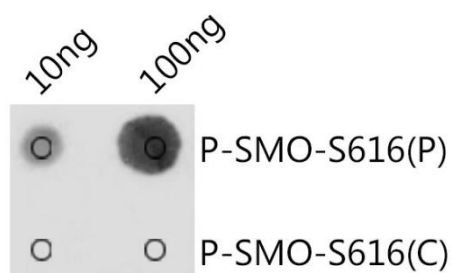
Recommended Dilutions:

WB	1:500 - 1:1000
DB	1:500 - 1:1000
ELISA	Recommended starting concentration is 1 µg/mL. Please optimize the concentration based on your specific assay requirements.

Protein Quantification (Optional):

To quantify total protein levels, use the Bradford Reagent included in this kit. Visit <https://www.assaygenie.com/bradford-protein-assay-protocol/> to view the full protocol

Validation Data



Dot-blot analysis of all sorts of peptides using Phospho-SMO- antibody (CABP0938) at 1:1000 dilution. Exposure time: 1s.