

## Phospho-Erk1-T202/Y204 + Erk2-T185/Y187 Monoclonal Antibody

CABP0974

### Description

---

This Phospho-Erk1-T202/Y204 + Erk2-T185/Y187 Monoclonal Antibody is supplied as a kit for advanced applications. The kit includes Bradford Reagent to quantify total protein concentration for accurate sample normalization (Optional).

### Product Information

---

<b>SKU:</b>	CABP0974
<b>Contents:</b>	20 µL, 100 µL Bradford Reagent: 1 vial (2ml)
<b>Category:</b>	Monoclonal Antibody
<b>Synonyms:</b>	ERK-1, ERK1, ERT2, HS44KDAP, HUMKER1A, P44ERK1, P44MAPK, PRKM3, p44-ERK1, p44-MAPK, Phospho-ERK1-T202/Y204 + ERK2-T185/Y187
<b>Clone:</b>	ARC1595
<b>Applications:</b>	<span>WB</span> <span>IHC-P</span> <span>ELISA</span>
<b>Conjugation:</b>	Unconjugated
<b>Reactivity:</b>	Human, Mouse, Rat

### Antibody Data

---

<b>Gene ID:</b>	5595 5594
<b>Uniprot:</b>	AB_2863871
<b>Host Species:</b>	Rabbit
<b>Purification:</b>	Affinity purification
<b>Observed MW:</b>	42kDa/44kDa
<b>Calculated MW:</b>	42kDa/44kDa

## Preparation & Storage

**Storage:** Store at -20°C. Avoid freeze / thaw cycles. Buffer: PBS with 0.09% Sodium azide, 0.05% BSA, 50% glycerol, pH 7.3.

Store Bradford Reagent at Room Temperature for 1 Year.

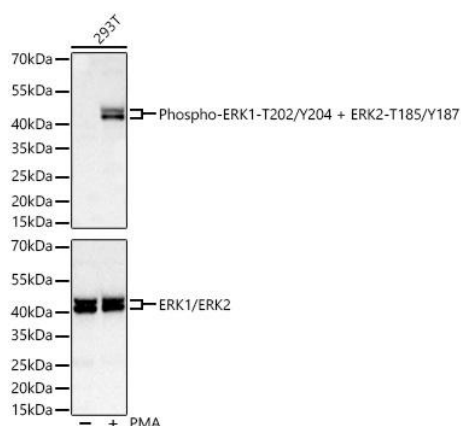
**Positive Sample:** C6 treated with PMA, 293T treated with PMA

**Recommended Dilutions:**

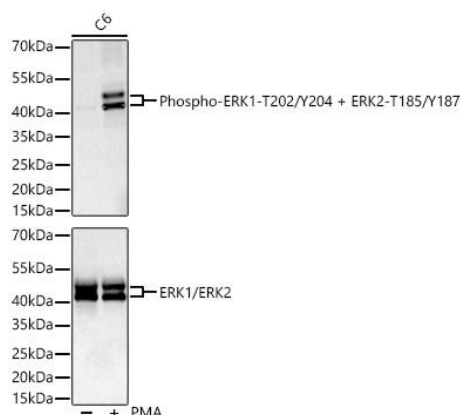
<b>WB</b>	1:1000 - 1:3000
<b>IHC-P</b>	1:50 - 1:200
<b>ELISA</b>	Recommended starting concentration is 1 µg/mL. Please optimize the concentration based on your specific assay requirements.

**Protein Quantification (Optional):** To quantify total protein levels, use the Bradford Reagent included in this kit. Visit <https://www.assaygenie.com/bradford-protein-assay-protocol/> to view the full protocol

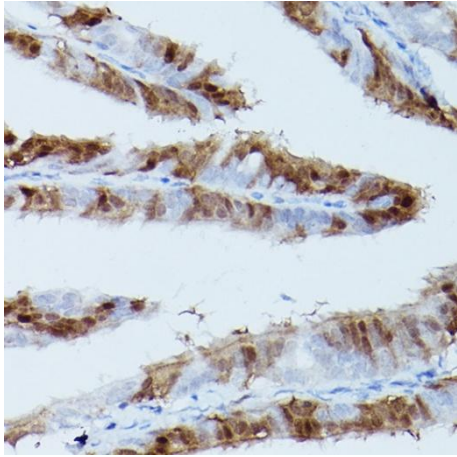
## Validation Data



Western blot analysis of lysates from 293T cells using Phospho-ERK1-T202/Y204 + ERK2-T185/Y187 Rabbit mAb (CABP0974) at 1:1000 dilution (upper) or /2 Rabbit mAb (CAB4782) at 1:3000 dilution (lower) incubated overnight at 4°C. 293T cells were treated with PMA (100 nM) at 37°C for 30 minutes after serum-starvation overnight. Secondary antibody: HRP-conjugated Goat anti-Rabbit IgG (H+L) (CABS014) at 1:10000 dilution. Lysates/proteins: 30 µg per lane. Blocking buffer: 3 % nonfat dry milk in TBST. Detection: ECL Basic Kit. Exposure time: 10s.



Western blot analysis of lysates from cells using Phospho-ERK1-T202/Y204 + ERK2-T185/Y187 Rabbit mAb (CABP0974) at 1:1000 dilution (upper) or /2 Rabbit mAb (CAB4782) at 1:3000 dilution (lower) incubated overnight at 4°C. cells were treated with PMA (200 nM) at 37°C for 10 minutes after serum-starvation overnight. Secondary antibody: HRP-conjugated Goat anti-Rabbit IgG (H+L) (CABS014) at 1:10000 dilution. Lysates/proteins: 30 µg per lane. Blocking buffer: 3 % nonfat dry milk in TBST. Detection: ECL Basic Kit. Exposure time: 45s.



Immunohistochemistry analysis of paraffin-embedded Rat fallopian tube using Phospho- $\alpha$ -actinin Rabbit mAb (CABP0974) at dilution of 1:100 (40x lens). High pressure antigen retrieval performed with 0.01M Citrate buffer (pH 6.0) prior to IHC staining.