

Phospho-Smad2-S250 Monoclonal Antibody

CABP1007

Description

This Phospho-Smad2-S250 Monoclonal Antibody is supplied as a kit for advanced applications. The kit includes Bradford Reagent to quantify total protein concentration for accurate sample normalization (Optional).

Product Information

| | |
|----------------------|---|
| SKU: | CABP1007 |
| Contents: | 20 μ L, 100 μ L Bradford Reagent: 1 vial (2ml) |
| Category: | Monoclonal Antibody |
| Synonyms: | JV18, LDS6, CHTD8, MADH2, MADR2, JV18-1, hMAD-2, hSMAD2, Phospho-Smad2-S250 |
| Clone: | ARC1552 |
| Applications: | WB ELISA |
| Conjugation: | Unconjugated |
| Reactivity: | Human, Mouse |

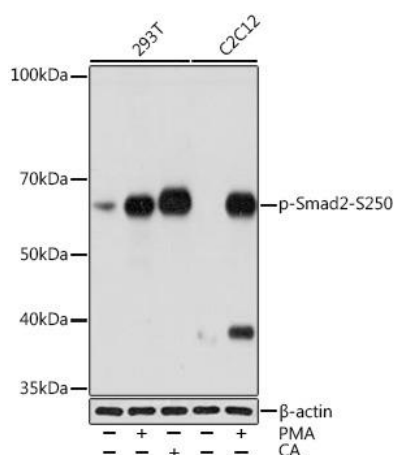
Antibody Data

| | |
|-----------------------|-----------------------|
| Gene ID: | 4087 |
| Uniprot: | AB_2863898 |
| Host Species: | Rabbit |
| Purification: | Affinity purification |
| Observed MW: | 60kDa |
| Calculated MW: | 52kDa |

Preparation & Storage

| | | |
|---|---|---|
| Storage: | Store at -20°C. Avoid freeze / thaw cycles. Buffer: PBS containing 50% glycerol and 0.05% BSA, preserved with proclin300 or sodium azide (as specified on the Certificate of Analysis), pH 7.3. Store Bradford Reagent at Room Temperature for 1 Year. | |
| Positive Sample: | 293T treated with PMA, 293T treated with Calyculin A, C2C12 treated with PMA | |
| Recommended Dilutions: | WB | 1:500 - 1:2000 |
| | ELISA | Recommended starting concentration is 1 µg/mL. Please optimize the concentration based on your specific assay requirements. |
| Protein Quantification (Optional): | To quantify total protein levels, use the Bradford Reagent included in this kit. Visit https://www.assaygenie.com/bradford-protein-assay-protocol/ to view the full protocol | |

Validation Data



Western blot analysis of various lysates using Phospho-Smad2- Rabbit mAb (CABP1007) at 1:1000 dilution. 293T cells were treated with PMA/TPA (200 nM) at 37°C for 30 minutes after serum-starvation overnight or treated with Calyculin A (100 nM) at 37°C for 30 minutes after serum-starvation overnight. C2C12 cells were treated with PMA/TPA (200 nM) at 37°C for 30 minutes after serum-starvation overnight. Secondary antibody: HRP-conjugated Goat anti-Rabbit IgG (H+L) (CABS014) at 1:10000 dilution. Lysates/proteins: 25µg per lane. Blocking buffer: 3% BSA. Detection: ECL Basic Kit. Exposure time: 10s.