

## Phospho-Raf1-S621 Monoclonal Antibody

CABP1011

### Description

---

This Phospho-Raf1-S621 Monoclonal Antibody is supplied as a kit for advanced applications. The kit includes Bradford Reagent to quantify total protein concentration for accurate sample normalization (Optional).

### Product Information

---

<b>SKU:</b>	CABP1011
<b>Contents:</b>	20 $\mu$ L, 100 $\mu$ L Bradford Reagent: 1 vial (2ml)
<b>Category:</b>	Monoclonal Antibody
<b>Synonyms:</b>	NS5, CRAF, Raf-1, c-Raf, CMD1NN, Phospho-Raf1-S621
<b>Clone:</b>	ARC1556
<b>Applications:</b>	<span>WB</span> <span>ELISA</span>
<b>Conjugation:</b>	Unconjugated
<b>Reactivity:</b>	Human, Rat

### Antibody Data

---

<b>Gene ID:</b>	5894
<b>Uniprot:</b>	AB_2863900
<b>Host Species:</b>	Rabbit
<b>Purification:</b>	Affinity purification
<b>Observed MW:</b>	73kDa
<b>Calculated MW:</b>	73kDa

## Preparation & Storage

**Storage:** Store at -20°C. Avoid freeze / thaw cycles. Buffer: PBS containing 50% glycerol and 0.05% BSA, preserved with proclin300 or sodium azide (as specified on the Certificate of Analysis), pH 7.3.

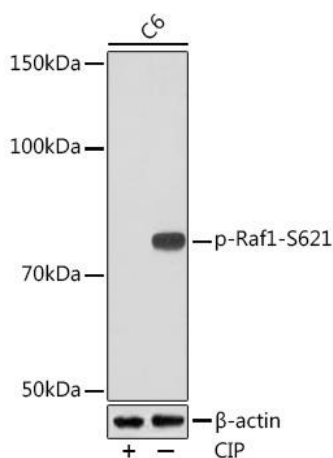
Store Bradford Reagent at Room Temperature for 1 Year.

**Positive Sample:** C6, HeLa

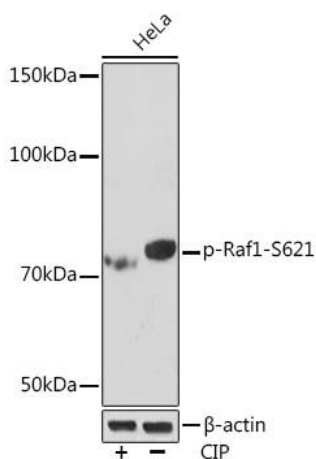
<b>Recommended Dilutions:</b>	<b>WB</b>	1:500 - 1:1000
	<b>ELISA</b>	Recommended starting concentration is 1 µg/mL. Please optimize the concentration based on your specific assay requirements.

**Protein Quantification (Optional):** To quantify total protein levels, use the Bradford Reagent included in this kit. Visit <https://www.assaygenie.com/bradford-protein-assay-protocol/> to view the full protocol

## Validation Data



Western blot analysis of lysates from cells, using Phospho-Raf1- Rabbit mAb (CABP1011) at 1:1000 dilution. cells were treated by CIP(20uL/400ul) at 37°C for 1 hour. Secondary antibody: HRP-conjugated Goat anti-Rabbit IgG (H+L) (CABS014) at 1:10000 dilution. Lysates/proteins: 25µg per lane. Blocking buffer: 3% BSA. Detection: ECL Basic Kit (AbGn00020). Exposure time: 3min.



Western blot analysis of lysates from HeLa cells, using Phospho-Raf1- Rabbit mAb (CABP1011) at 1:1000 dilution. HeLa cells were treated by CIP(20uL/400ul) at 37°C for 1 hour. Secondary antibody: HRP-conjugated Goat anti-Rabbit IgG (H+L) (CABS014) at 1:10000 dilution. Lysates/proteins: 25µg per lane. Blocking buffer: 3% BSA. Detection: ECL Enhanced Kit (AbGn00021). Exposure time: 3min.

