

Phospho-ATM-S1981 Monoclonal Antibody

CABP1030

Description

This Phospho-ATM-S1981 Monoclonal Antibody is supplied as a kit for advanced applications. The kit includes Bradford Reagent to quantify total protein concentration for accurate sample normalization (Optional).

Product Information

SKU:	CABP1030
Contents:	20 μ L, 100 μ L Bradford Reagent: 1 vial (2ml)
Category:	Monoclonal Antibody
Synonyms:	AT1, ATA, ATC, ATD, ATE, ATDC, TEL1, TELO1, Phospho-ATM-S1981
Clone:	ARC1575
Applications:	WB ELISA IF-P
Conjugation:	Unconjugated
Reactivity:	Human

Antibody Data

Gene ID:	472
Uniprot:	AB_2863913
Host Species:	Rabbit
Purification:	Affinity purification
Observed MW:	370kDa
Calculated MW:	351kDa

Preparation & Storage

Storage: Store at -20°C. Avoid freeze / thaw cycles. Buffer: PBS containing 50% glycerol and 0.05% BSA, preserved with proclin300 or sodium azide (as specified on the Certificate of Analysis), pH 7.3.

Store Bradford Reagent at Room Temperature for 1 Year.

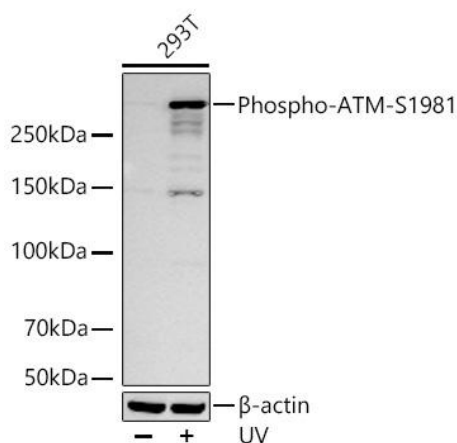
Positive Sample: 293T treated with UV

Recommended Dilutions:

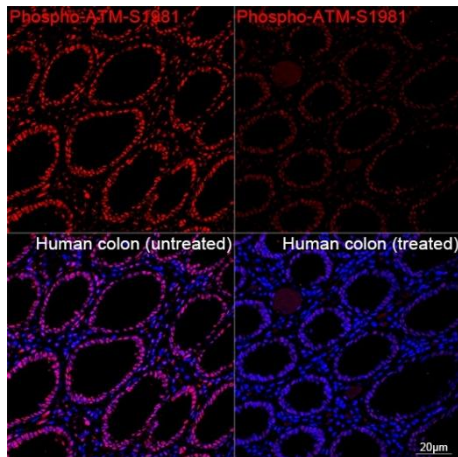
WB	1:2000 - 1:8000
IF-P	1:50 - 1:200
ELISA	Recommended starting concentration is 1 µg/mL. Please optimize the concentration based on your specific assay requirements.

Protein Quantification (Optional): To quantify total protein levels, use the Bradford Reagent included in this kit. Visit <https://www.assaygenie.com/bradford-protein-assay-protocol/> to view the full protocol

Validation Data



Western blot analysis of lysates from 293T cells using Phospho-ATM- Rabbit mAb (CABP1030) at 1:8000 dilution incubated overnight at 4°C. 293T cells were treated with UV at room temperature for 15-30 minutes. Secondary antibody: HRP-conjugated Goat anti-Rabbit IgG (H+L) (CABS014) at 1:10000 dilution. Lysates/proteins: 30 µg per lane. Blocking buffer: 3 % nonfat dry milk in TBST. Detection: ECL Basic Kit (AbGn00020). Exposure time: 45s.



Confocal imaging of paraffin-embedded Human colon tissue(untreated) and Human colon tissue(treated with λ pp) using Phospho-ATM- Rabbit mAb (CABP1030, dilution 1:200) followed by a further incubation with Cy3 Goat Anti-Rabbit IgG (H+L) (CABS007, dilution 1:500) (Red). DAPI was used for nuclear staining (Blue). High pressure antigen retrieval performed with 0.01M Citrate Buffer(pH 6.0) prior to IF staining. Objective: 40x.