

Phospho-ErbB3/HER3-Y1222 Monoclonal Antibody

CABP1052

Description

This Phospho-ErbB3/HER3-Y1222 Monoclonal Antibody is supplied as a kit for advanced applications. The kit includes Bradford Reagent to quantify total protein concentration for accurate sample normalization (Optional).

Product Information

SKU:	CABP1052
Contents:	20 μ L, 100 μ L Bradford Reagent: 1 vial (2ml)
Category:	Monoclonal Antibody
Synonyms:	HER3, FERLK, LCCS2, VSCN1, ErbB-3, c-erbB3, erbB3-S, MDA-BF-1, c-erbB-3, p180-ErbB3, p45-sErbB3, p85-sErbB3, Phospho-ErbB3/HER3-Y1222
Clone:	ARC1599
Applications:	WB ELISA
Conjugation:	Unconjugated
Reactivity:	Human

Antibody Data

Gene ID:	2065
Uniprot:	AB_2863925
Host Species:	Rabbit
Purification:	Affinity purification
Observed MW:	185kDa
Calculated MW:	148kDa

Preparation & Storage

Storage: Store at -20°C. Avoid freeze / thaw cycles. Buffer: PBS containing 50% glycerol and 0.05% BSA, preserved with proclin300 or sodium azide (as specified on the Certificate of Analysis), pH 7.3.

Store Bradford Reagent at Room Temperature for 1 Year.

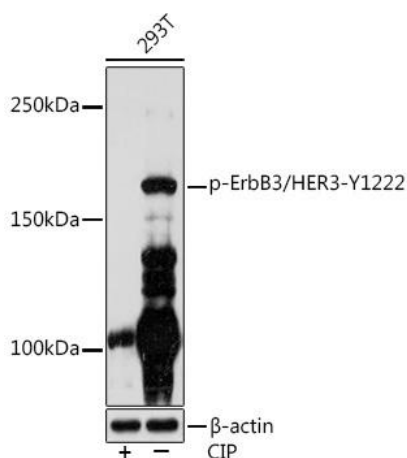
Positive Sample: 293T cells were treated with CIP

Recommended Dilutions:

WB	1:500 - 1:2000
ELISA	Recommended starting concentration is 1 µg/mL. Please optimize the concentration based on your specific assay requirements.

Protein Quantification (Optional): To quantify total protein levels, use the Bradford Reagent included in this kit. Visit <https://www.assaygenie.com/bradford-protein-assay-protocol/> to view the full protocol

Validation Data



Western blot analysis of lysates from 293T cells, using Phospho-ErbB3/- Rabbit mAb (CABP1052) at 1:1000 dilution. 293T cells were treated with CIP(20uL/400ul) at 37°C for 1 hour. Secondary antibody: HRP-conjugated Goat anti-Rabbit IgG (H+L) (CABS014) at 1:10000 dilution. Lysates/proteins: 25µg per lane. Blocking buffer: 3% BSA. Detection: ECL Enhanced Kit (AbGn00021). Exposure time: 3min.