

# Phospho-p70 S6 Kinase 1-T421/S424 Antibody

CABP1106



## Description

---

This Phospho-p70 S6 Kinase 1-T421/S424 Antibody is supplied as a kit for advanced applications. The kit includes Bradford Reagent to quantify total protein concentration for accurate sample normalization (Optional).

## Product Information

---

<b>SKU:</b>	CABP1106
<b>Contents:</b>	20 µL, 100 µL Bradford Reagent: 1 vial (2ml)
<b>Category:</b>	Polyclonal Antibody
<b>Synonyms:</b>	S6K, PS6K, S6K1, STK14A, p70-S6K, p70 S6KA, p70-alpha, S6K-beta-1, p70(S6K)-alpha, Phospho-p70 S6 Kinase 1-T421/S424
<b>Clone:</b>	-
<b>Applications:</b>	 
<b>Conjugation:</b>	-
<b>Reactivity:</b>	Human, Mouse, Rat

## Antibody Data

---

<b>Gene ID:</b>	6198
<b>Uniprot:</b>	AB_2863975
<b>Host Species:</b>	Rabbit
<b>Purification:</b>	Affinity purification
<b>Observed MW:</b>	70kDa
<b>Calculated MW:</b>	59kDa

**Manufacturers Statement:** This final kit system is assembled and quality-released by Assay Genie Limited.

## Preparation & Storage

**Storage:** Store at -20°C. Avoid freeze / thaw cycles. Buffer: PBS with 0.01% thimerosal, 50% glycerol, pH 7.3.

Store Bradford Reagent at Room Temperature for 1 Year.

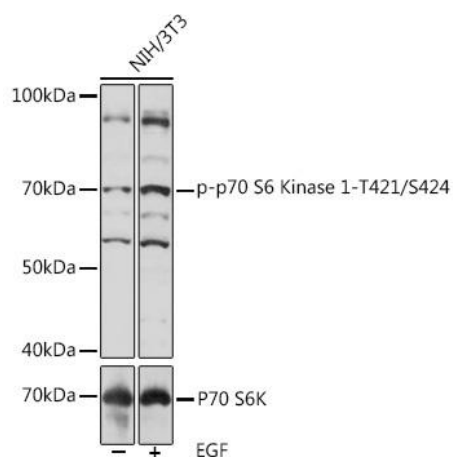
**Positive Sample:** NIH/3T3 treated with EGF

**Recommended Dilutions:**

<b>WB</b>	1:500 - 1:2000
<b>ELISA</b>	Recommended starting concentration is 1 µg/mL. Please optimize the concentration based on your specific assay requirements.

**Protein Quantification (Optional):** To quantify total protein levels, use the Bradford Reagent included in this kit. Visit <https://www.assaygenie.com/bradford-protein-assay-protocol/> to view the full protocol

## Validation Data



Western blot analysis of lysates from NIH/3T3 cells, using Phospho-p70 Kinase 1-/ pAb (CABP1106) at 1:1000 dilution or S6K antibody (CAB16968). NIH/3T3 cells were treated with EGF (100 ng/mL) at 37°C for 30 minutes after serum-starvation overnight. Secondary antibody: HRP-conjugated Goat anti-Rabbit IgG (H+L) (CABS014) at 1:10000 dilution. Lysates/proteins: 25µg per lane. Blocking buffer: 3% BSA. Detection: ECL Basic Kit (AbGn00020). Exposure time: 180s.