

## Phospho-SMC1-S957 Monoclonal Antibody

CABP1145

### Description

---

This Phospho-SMC1-S957 Monoclonal Antibody is supplied as a kit for advanced applications. The kit includes Bradford Reagent to quantify total protein concentration for accurate sample normalization (Optional).

### Product Information

---

|                      |  |
|----------------------|--|
| <b>SKU:</b>          | CABP1145   |
| <b>Contents:</b>     | 20 $\mu$ L, 100 $\mu$ L<br>Bradford Reagent: 1 vial (2ml)                              |
| <b>Category:</b>     | Monoclonal Antibody  |
| <b>Synonyms:</b>     | SMC1, SMCB, CDLS2, DEE85, SB1.8, EIEE85, SMC1L1, DXS423E, SMC1alpha, Phospho-SMC1-S957 |
| <b>Clone:</b>        | ARC1606  |
| <b>Applications:</b> | <span>WB</span> <span>IHC-P</span> <span>ELISA</span>                                  |
| <b>Conjugation:</b>  | Unconjugated   |
| <b>Reactivity:</b>   | Human, Mouse, Rat  |

### Antibody Data

---

|                       |                       |
|-----------------------|-----------------------|
| <b>Gene ID:</b>       | 8243                  |
| <b>Uniprot:</b>       | AB_2864010            |
| <b>Host Species:</b>  | Rabbit                |
| <b>Purification:</b>  | Affinity purification |
| <b>Observed MW:</b>   | 160kDa                |
| <b>Calculated MW:</b> | 143kDa                |

## Preparation & Storage

**Storage:** Store at -20°C. Avoid freeze / thaw cycles. Buffer: PBS containing 50% glycerol and 0.05% BSA, preserved with proclin300 or sodium azide (as specified on the Certificate of Analysis), pH 7.3.

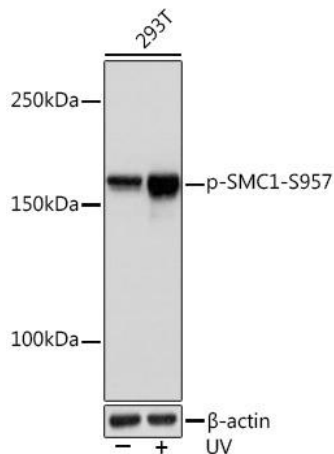
Store Bradford Reagent at Room Temperature for 1 Year.

**Positive Sample:** 293T treated with UV, NIH/3T3 treated with UV

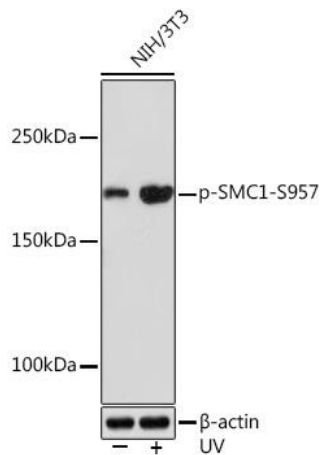
|                               |              |   |
|-------------------------------|--------------|---|
| <b>Recommended Dilutions:</b> | <b>WB</b>    | 1:500 - 1:2000  |
|                               | <b>IHC-P</b> | 1:50 - 1:200  |
|                               | <b>ELISA</b> | Recommended starting concentration is 1 µg/mL. Please optimize the concentration based on your specific assay requirements. |

**Protein Quantification (Optional):** To quantify total protein levels, use the Bradford Reagent included in this kit. Visit <https://www.assaygenie.com/bradford-protein-assay-protocol/> to view the full protocol

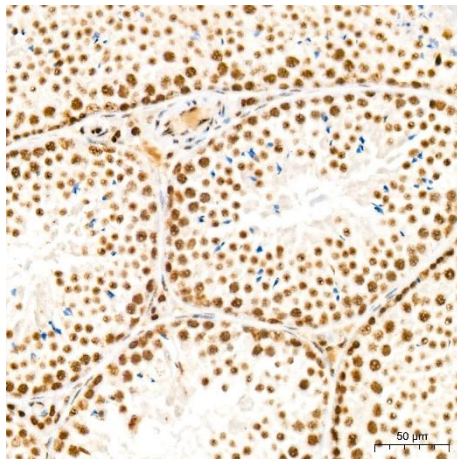
## Validation Data



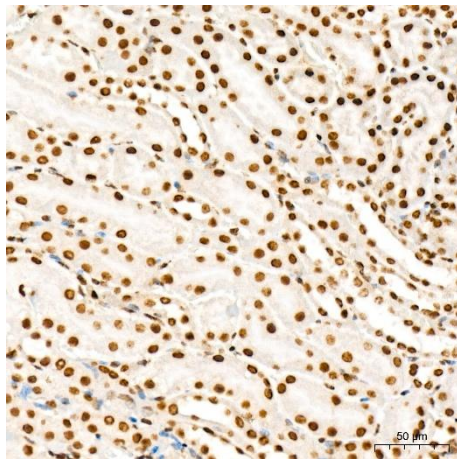
Western blot analysis of lysates from 293T cells, using Phospho-- Rabbit mAb (CABP1145) at 1:1000 dilution. 293T cells were treated with UV at room temperature for 15-30 minutes. Secondary antibody: HRP-conjugated Goat anti-Rabbit IgG (H+L) (CABS014) at 1:10000 dilution. Lysates/proteins: 25µg per lane. Blocking buffer: 3% BSA. Detection: ECL Basic Kit (AbGn00020). Exposure time: 1s.



Western blot analysis of lysates from NIH/3T3 cells, using Phospho-- Rabbit mAb (CABP1145) at 1:1000 dilution. NIH/3T3 cells were treated with UV at room temperature for 15-30 minutes. Secondary antibody: HRP-conjugated Goat anti-Rabbit IgG (H+L) (CABS014) at 1:10000 dilution. Lysates/proteins: 25µg per lane. Blocking buffer: 3% BSA. Detection: ECL Enhanced Kit (AbGn00021). Exposure time: 3min.



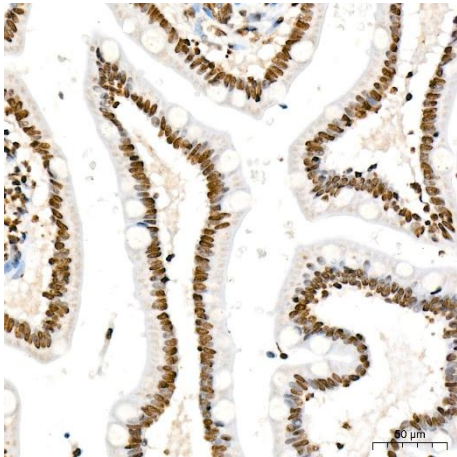
Immunohistochemistry analysis of paraffin-embedded Mouse testis tissue using Phospho-- Rabbit mAb (CABP1145) at a dilution of 1:200 (40x lens). High pressure antigen retrieval was performed with 0.01 M citrate buffer (pH 6.0) prior to IHC staining.



Immunohistochemistry analysis of paraffin-embedded Mouse kidney tissue using Phospho-- Rabbit mAb (CABP1145) at a dilution of 1:200 (40x lens). High pressure antigen retrieval was performed with 0.01 M citrate buffer (pH 6.0) prior to IHC staining.



Immunohistochemistry analysis of paraffin-embedded Human esophagus tissue using Phospho-- Rabbit mAb (CABP1145) at a dilution of 1:200 (40x lens). High pressure antigen retrieval was performed with 0.01 M citrate buffer (pH 6.0) prior to IHC staining.



Immunohistochemistry analysis of paraffin-embedded Human small intestine tissue using Phospho-- Rabbit mAb (CABP1145) at a dilution of 1:200 (40x lens). High pressure antigen retrieval was performed with 0.01 M citrate buffer (pH 6.0) prior to IHC staining.