

## Phospho-p90Rsk/RSK1/RPS6KA1-S380 Monoclonal Antibody

CABP1147

### Description

---

This Phospho-p90Rsk/RSK1/RPS6KA1-S380 Monoclonal Antibody is supplied as a kit for advanced applications. The kit includes Bradford Reagent to quantify total protein concentration for accurate sample normalization (Optional).

### Product Information

---

<b>SKU:</b>	CABP1147
<b>Contents:</b>	20 µL, 100 µL Bradford Reagent: 1 vial (2ml)
<b>Category:</b>	Monoclonal Antibody
<b>Synonyms:</b>	RSK, HU-1, RSK1, p90Rsk, MAPKAPK1, MAPKAPK1A, Phospho-p90Rsk/RSK1/RPS6KA1-S380
<b>Clone:</b>	ARC1608
<b>Applications:</b>	<span>WB</span> <span>ELISA</span>
<b>Conjugation:</b>	Unconjugated
<b>Reactivity:</b>	Human, Mouse, Rat

### Antibody Data

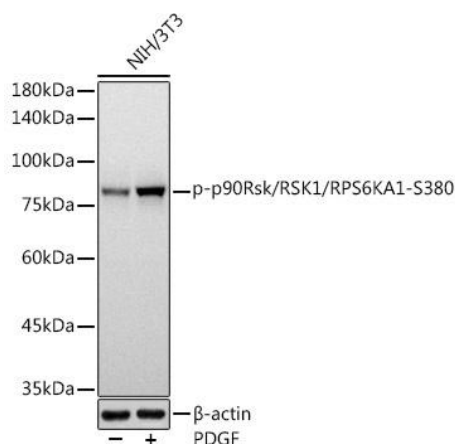
---

<b>Gene ID:</b>	6195
<b>Uniprot:</b>	AB_2864012
<b>Host Species:</b>	Rabbit
<b>Purification:</b>	Affinity purification
<b>Observed MW:</b>	90kDa
<b>Calculated MW:</b>	83kDa

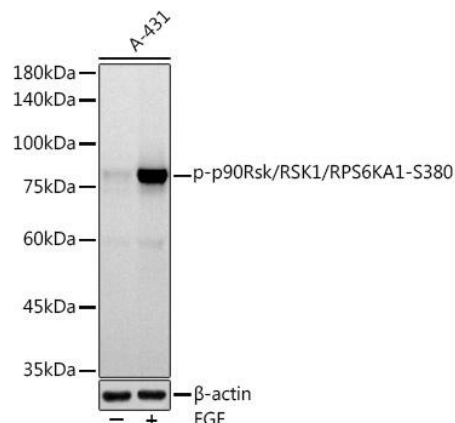
## Preparation & Storage

<b>Storage:</b>	Store at -20°C. Avoid freeze / thaw cycles. Buffer: PBS containing 50% glycerol and 0.05% BSA, preserved with proclin300 or sodium azide (as specified on the Certificate of Analysis), pH 7.3. Store Bradford Reagent at Room Temperature for 1 Year.				
<b>Positive Sample:</b>	A-431 treated with EGF, NIH/3T3 treated with PDGF, C6 treated with PMA				
<b>Recommended Dilutions:</b>	<table border="1"> <tr> <td><b>WB</b></td><td>1:500 - 1:1000</td></tr> <tr> <td><b>ELISA</b></td><td>Recommended starting concentration is 1 µg/mL. Please optimize the concentration based on your specific assay requirements.</td></tr> </table>	<b>WB</b>	1:500 - 1:1000	<b>ELISA</b>	Recommended starting concentration is 1 µg/mL. Please optimize the concentration based on your specific assay requirements.
<b>WB</b>	1:500 - 1:1000				
<b>ELISA</b>	Recommended starting concentration is 1 µg/mL. Please optimize the concentration based on your specific assay requirements.				
<b>Protein Quantification (Optional):</b>	To quantify total protein levels, use the Bradford Reagent included in this kit. Visit <a href="https://www.assaygenie.com/bradford-protein-assay-protocol/">https://www.assaygenie.com/bradford-protein-assay-protocol/</a> to view the full protocol				

## Validation Data



Western blot analysis of lysates from NIH/3T3 cells, using Phospho-p90Rsk//RPS6KA1- Rabbit mAb (CABP1147) at 1:1000 dilution. NIH/3T3 cells were treated with PDGF (100 ng/ml) at 37°C for 30 minutes after serum-starvation overnight. Secondary antibody: HRP-conjugated Goat anti-Rabbit IgG (H+L) (CABS014) at 1:10000 dilution. Lysates/proteins: 25µg per lane. Blocking buffer: 3% nonfat dry milk in TBST. Detection: ECL Basic Kit (AbGn00020). Exposure time: 3s.



Western blot analysis of lysates from A-431 cells, using Phospho-p90Rsk//RPS6KA1- Rabbit mAb (CABP1147) at 1:1000 dilution. A-431 cells were treated with EGF (100 ng/ml) at 37°C for 30 minutes after serum-starvation overnight. Secondary antibody: HRP-conjugated Goat anti-Rabbit IgG (H+L) (CABS014) at 1:10000 dilution. Lysates/proteins: 25µg per lane. Blocking buffer: 3% nonfat dry milk in TBST. Detection: ECL Basic Kit (AbGn00020). Exposure time: 90s.