

Phospho-SHC1-Y427 Antibody

CABP1184

Description

This Phospho-SHC1-Y427 Antibody is supplied as a kit for advanced applications. The kit includes Bradford Reagent to quantify total protein concentration for accurate sample normalization (Optional).

Product Information

SKU:	CABP1184
Contents:	20 μ L, 100 μ L Bradford Reagent: 1 vial (2ml)
Category:	Polyclonal Antibody
Synonyms:	SHC, SHCA, Phospho-SHC1-Y427
Clone:	-
Applications:	WB ELISA
Conjugation:	-
Reactivity:	Human, Mouse

Antibody Data

Gene ID:	6464
Uniprot:	AB_2864042
Host Species:	Rabbit
Purification:	Affinity purification
Observed MW:	50kDa/55kDa
Calculated MW:	63kDa

Preparation & Storage

Storage: Store at -20°C. Avoid freeze / thaw cycles. Buffer: PBS containing 50% glycerol, preserved with proclin300 or sodium azide (as specified on the Certificate of Analysis), pH 7.3.

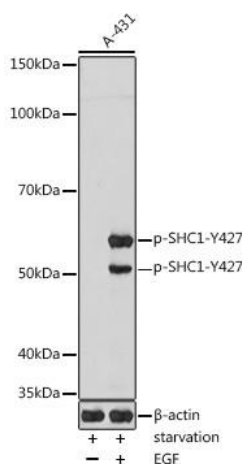
Store Bradford Reagent at Room Temperature for 1 Year.

Positive Sample: A-431 treated with EGF

Recommended Dilutions:	WB	1:500 - 1:1000
	ELISA	Recommended starting concentration is 1 µg/mL. Please optimize the concentration based on your specific assay requirements.

Protein Quantification (Optional): To quantify total protein levels, use the Bradford Reagent included in this kit. Visit <https://www.assaygenie.com/bradford-protein-assay-protocol/> to view the full protocol

Validation Data



Western blot analysis of lysates from A-431 cells, using Phospho-- Rabbit pAb (CABP1184) at 1:1000 dilution. A-431 cells were treated with EGF (100 ng/ml) at 37°C for 30 minutes after serum-starvation overnight. Secondary antibody: HRP-conjugated Goat anti-Rabbit IgG (H+L) (CABS014) at 1:10000 dilution. Lysates/proteins: 25µg per lane. Blocking buffer: 3% nonfat dry milk in TBST. Detection: ECL Enhanced Kit (AbGn00021). Exposure time: 180s.