

Phospho-RIPK1/RIP-S166 Antibody

CABP1230

Description

This Phospho-RIPK1/RIP-S166 Antibody is supplied as a kit for advanced applications. The kit includes Bradford Reagent to quantify total protein concentration for accurate sample normalization (Optional).

Product Information

SKU:	CABP1230
Contents:	20 μ L, 100 μ L Bradford Reagent: 1 vial (2ml)
Category:	Polyclonal Antibody
Synonyms:	RIP, RIP1, AIEFL, IMD57, RIP-1, Phospho-RIPK1/RIP-S166
Clone:	-
Applications:	WB ELISA
Conjugation:	Unconjugated
Reactivity:	Human, Mouse

Antibody Data

Gene ID:	8737
Uniprot:	-
Host Species:	Rabbit
Purification:	Affinity purification
Observed MW:	75 kDa
Calculated MW:	76 kDa

Preparation & Storage

Storage: Store at -20°C. Avoid freeze / thaw cycles. Buffer: PBS with 0.09% Sodium azide, 50% glycerol, pH 7.3.

Store Bradford Reagent at Room Temperature for 1 Year.

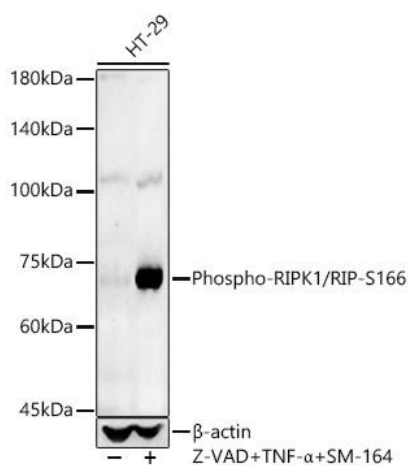
Positive Sample: HT-29 treated with Z-VAD, TNF- α and SM-164

Recommended Dilutions:

WB	1:500 - 1:5000
ELISA	Recommended starting concentration is 1 μ g/mL. Please optimize the concentration based on your specific assay requirements.

Protein Quantification (Optional): To quantify total protein levels, use the Bradford Reagent included in this kit. Visit <https://www.assaygenie.com/bradford-protein-assay-protocol/> to view the full protocol

Validation Data



Western blot analysis of lysates from HT-29 cells, using Phospho-RIPK1/RIP- Rabbit pAb (CABP1230) at 1:800 dilution. HT-29 cells were treated with Z-VAD (50 μ M), human TNF- α (50ng/ml) and SM-164 (200nM) at 37°C for 5 hour. Secondary antibody: HRP-conjugated Goat anti-Rabbit IgG (H+L) (CABS014) at 1:10000 dilution. Lysates/proteins: 25 μ g per lane. Blocking buffer: 3% nonfat dry milk in TBST. Detection: ECL Basic Kit (AbGn00020). Exposure time: 60s.