

## Phospho-TDP-43/TARDB-S409/S410 Antibody

CABP1241

### Description

---

This Phospho-TDP-43/TARDB-S409/S410 Antibody is supplied as a kit for advanced applications. The kit includes Bradford Reagent to quantify total protein concentration for accurate sample normalization (Optional).

### Product Information

---

<b>SKU:</b>	CABP1241
<b>Contents:</b>	20 $\mu$ L, 100 $\mu$ L Bradford Reagent: 1 vial (2ml)
<b>Category:</b>	Polyclonal Antibody
<b>Synonyms:</b>	ALS10, TDP-43, Phospho-TDP-43/TARDBP-S409/S410
<b>Clone:</b>	-
<b>Applications:</b>	<span>WB</span> <span>ELISA</span> <span>DB</span>
<b>Conjugation:</b>	Unconjugated
<b>Reactivity:</b>	Human

### Antibody Data

---

<b>Gene ID:</b>	23435
<b>Uniprot:</b>	-
<b>Host Species:</b>	Rabbit
<b>Purification:</b>	Affinity purification
<b>Observed MW:</b>	Refer to figures
<b>Calculated MW:</b>	45kDa

## Preparation & Storage

**Storage:** Store at -20°C. Avoid freeze / thaw cycles. Buffer: PBS containing 50% glycerol, preserved with proclin300 or sodium azide (as specified on the Certificate of Analysis), pH 7.3.

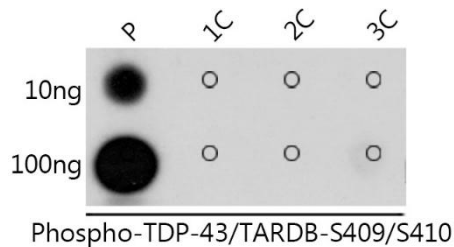
Store Bradford Reagent at Room Temperature for 1 Year.

**Positive Sample:** -

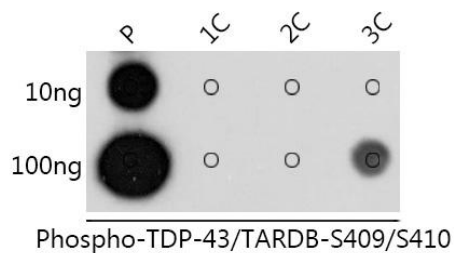
<b>Recommended Dilutions:</b>	<b>WB</b>	1:500 - 1:2000
	<b>DB</b>	1:500 - 1:1000
	<b>ELISA</b>	Recommended starting concentration is 1 µg/mL. Please optimize the concentration based on your specific assay requirements.

**Protein Quantification (Optional):** To quantify total protein levels, use the Bradford Reagent included in this kit. Visit <https://www.assaygenie.com/bradford-protein-assay-protocol/> to view the full protocol

## Validation Data



Dot-blot analysis of all sorts of peptides using Phospho-TDP-43/TARDB-/ antibody (CABP1241) at 1:1000 dilution. Exposure time: 1s.



Dot-blot analysis of all sorts of peptides using Phospho-TDP-43/TARDB-/ antibody (CABP1241) at 1:1000 dilution. Exposure time: 10s.