

Phospho-p38 MAPK-T180/Y182 Monoclonal Antibody

CABP1311

Description

This Phospho-p38 MAPK-T180/Y182 Monoclonal Antibody is supplied as a kit for advanced applications. The kit includes Bradford Reagent to quantify total protein concentration for accurate sample normalization (Optional).

Product Information

| | |
|----------------------|--|
| SKU: | CABP1311 |
| Contents: | 20 μ L, 100 μ L Bradford Reagent: 1 vial (2ml) |
| Category: | Monoclonal Antibody |
| Synonyms: | MAPK14, CSBP, CSBP1, CSBP2, CSPB1, EXIP, Mxi2, PRKM14, PRKM15, RK, SAPK2A, p38, p38ALPHA, p38 MAPK, Phospho-p38 MAPK-T180/Y182 |
| Clone: | ARC51018 |
| Applications: | WB ELISA |
| Conjugation: | - |
| Reactivity: | Human, Mouse, Rat |

Antibody Data

| | |
|-----------------------|-------------------------|
| Gene ID: | 5600 6300 5603 1432 |
| Uniprot: | - |
| Host Species: | Rabbit |
| Purification: | Affinity purification |
| Observed MW: | 43kDa |
| Calculated MW: | 29kDa/34kDa/35kDa/41kDa |

Preparation & Storage

Storage: Store at -20°C. Avoid freeze / thaw cycles. Buffer: PBS containing 50% glycerol and 0.05% BSA, preserved with proclin300 or sodium azide (as specified on the Certificate of Analysis), pH 7.3.

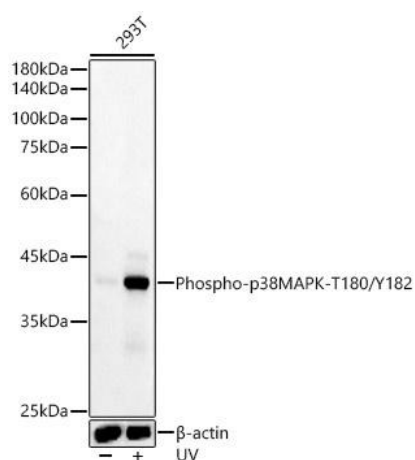
Store Bradford Reagent at Room Temperature for 1 Year.

Positive Sample: 293T treated with UV, NIH/3T3 treated with UV, C6 treated with UV

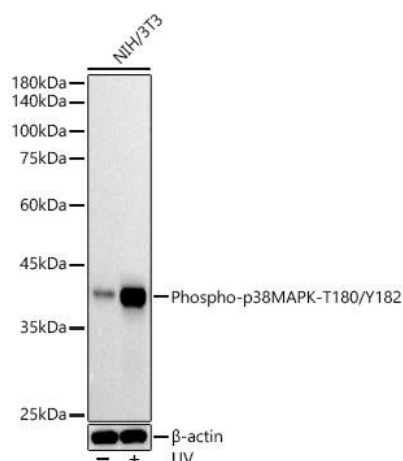
| | | |
|-------------------------------|--------------|---|
| Recommended Dilutions: | WB | 1:2000 - 1:20000 |
| | ELISA | Recommended starting concentration is 1 µg/mL. Please optimize the concentration based on your specific assay requirements. |

Protein Quantification (Optional): To quantify total protein levels, use the Bradford Reagent included in this kit. Visit <https://www.assaygenie.com/bradford-protein-assay-protocol/> to view the full protocol

Validation Data



Western blot analysis of various lysates, using Phospho-p38 MAPK-/ Rabbit mAb (CABP1311) at 1:20000 dilution. 293T cells were treated with UV at room temperature for 15-30 minutes. Secondary antibody: HRP-conjugated Goat anti-Rabbit IgG (H+L) (CABS014) at 1:10000 dilution. Lysates/proteins: 25µg per lane. Blocking buffer: 3% nonfat dry milk in TBST. Detection: ECL Basic Kit (AbGn00020). Exposure time: 10s.



Western blot analysis of lysates from NIH/3T3 cells, using Phospho-p38 MAPK-/ Rabbit mAb (CABP1311) at 1:20000 dilution. NIH/3T3 cells were treated with UV at room temperature for 15-30 minutes. Secondary antibody: HRP-conjugated Goat anti-Rabbit IgG (H+L) (CABS014) at 1:10000 dilution. Lysates/proteins: 25µg per lane. Blocking buffer: 3% nonfat dry milk in TBST. Detection: ECL Basic Kit (AbGn00020). Exposure time: 10s.

