

Phospho-CDK1-Y15 Monoclonal Antibody

CABP1350

Description

This Phospho-CDK1-Y15 Monoclonal Antibody is supplied as a kit for advanced applications. The kit includes Bradford Reagent to quantify total protein concentration for accurate sample normalization (Optional).

Product Information

SKU:	CABP1350
Contents:	20 μ L, 100 μ L Bradford Reagent: 1 vial (2ml)
Category:	Monoclonal Antibody
Synonyms:	CDC2, CDC28A, P34CDC2, Phospho-CDK1-Y15
Clone:	ARC55443
Applications:	WB ELISA
Conjugation:	Unconjugated
Reactivity:	Human

Antibody Data

Gene ID:	983
Uniprot:	-
Host Species:	Rabbit
Purification:	Affinity purification
Observed MW:	34kDa
Calculated MW:	34kDa

Preparation & Storage

Storage: Store at -20°C. Avoid freeze / thaw cycles. Buffer: PBS with 0.09% Sodium azide, 0.05% BSA, 50% glycerol, pH 7.3.

Store Bradford Reagent at Room Temperature for 1 Year.

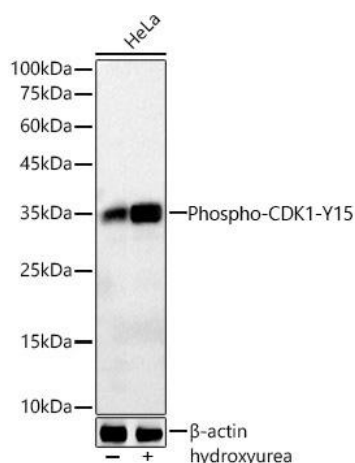
Positive Sample: HeLa treated with Hydroxyurea

Recommended Dilutions:

WB	1:1000 - 1:5000
ELISA	Recommended starting concentration is 1 µg/mL. Please optimize the concentration based on your specific assay requirements.

Protein Quantification (Optional): To quantify total protein levels, use the Bradford Reagent included in this kit. Visit <https://www.assaygenie.com/bradford-protein-assay-protocol/> to view the full protocol

Validation Data



Western blot analysis of lysates from HeLa cells using Phospho-- Rabbit mAb (CABP1350) at 1:2000 dilution. HeLa cells were treated with Hydroxyurea (4 mM) at 37°C for 20 hours. Secondary antibody: HRP-conjugated Goat anti-Rabbit IgG (H+L) (CABS014) at 1:10000 dilution. Lysates/proteins: 30 µg per lane. Blocking buffer: 3% nonfat dry milk in TBST. Detection: ECL Basic Kit (AbGn00020). Exposure time: 3 s.