

## Phospho-NF-kappaB p105-S932 Monoclonal Antibody

CABP1355

### Description

---

This Phospho-NF-kappaB p105-S932 Monoclonal Antibody is supplied as a kit for advanced applications. The kit includes Bradford Reagent to quantify total protein concentration for accurate sample normalization (Optional).

### Product Information

---

<b>SKU:</b>	CABP1355
<b>Contents:</b>	20 µL, 100 µL Bradford Reagent: 1 vial (2ml)
<b>Category:</b>	Monoclonal Antibody
<b>Synonyms:</b>	KBF1, EBP-1, NF-kB, CVID12, NF-kB1, NFkB-p50, NFkappaB, NF-kappaB, NFkB-p105, NF-kappa-B1, NF-kappabeta, Phospho-NF-kB p105-S932
<b>Clone:</b>	ARC55043
<b>Applications:</b>	<span>WB</span> <span>ELISA</span>
<b>Conjugation:</b>	Unconjugated
<b>Reactivity:</b>	Human, Mouse, Rat

### Antibody Data

---

<b>Gene ID:</b>	4790
<b>Uniprot:</b>	-
<b>Host Species:</b>	Rabbit
<b>Purification:</b>	Affinity purification
<b>Observed MW:</b>	120kDa
<b>Calculated MW:</b>	105kDa

## Preparation & Storage

**Storage:** Store at -20°C. Avoid freeze / thaw cycles. Buffer: PBS with 0.09% Sodium azide, 0.05% BSA, 50% glycerol, pH 7.3.

Store Bradford Reagent at Room Temperature for 1 Year.

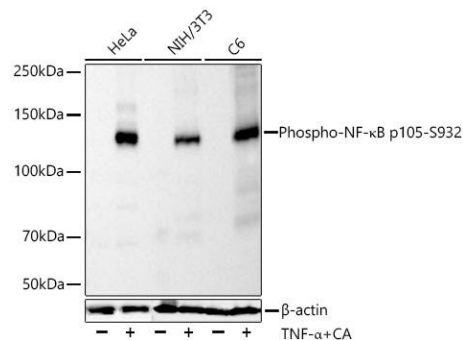
**Positive Sample:** HeLa treated with TNF- $\alpha$  and CA, NIH/3T3 treated with TNF- $\alpha$  and CA, C6 treated with TNF- $\alpha$  and CA

**Recommended Dilutions:**

<b>WB</b>	1:2000 - 1:10000
<b>ELISA</b>	Recommended starting concentration is 1 $\mu$ g/mL. Please optimize the concentration based on your specific assay requirements.

**Protein Quantification (Optional):** To quantify total protein levels, use the Bradford Reagent included in this kit. Visit <https://www.assaygenie.com/bradford-protein-assay-protocol/> to view the full protocol

## Validation Data



Western blot analysis of various lysates using Phospho-NF- $\kappa$ B p105- Rabbit mAb (CABP1355) at 1:9000 dilution incubated overnight at 4°C. HeLa, NIH/3T3 and cells were treated with TNF- $\alpha$  (20 ng/mL) and CA (100 nM) at 37°C for 10 minutes. Secondary antibody: HRP-conjugated Goat anti-Rabbit IgG (H+L) (CABS014) at 1:10000 dilution. Lysates/proteins: 30  $\mu$ g per lane. Blocking buffer: 3% nonfat dry milk in TBST. Detection: ECL Basic Kit (AbGn00020). Exposure time: 90s.