

Phospho-eIF4EBP1-T37/T46 Monoclonal Antibody

CABP1381

Description

This Phospho-eIF4EBP1-T37/T46 Monoclonal Antibody is supplied as a kit for advanced applications. The kit includes Bradford Reagent to quantify total protein concentration for accurate sample normalization (Optional).

Product Information

SKU:	CABP1381
Contents:	20 µL, 100 µL Bradford Reagent: 1 vial (2ml)
Category:	Monoclonal Antibody
Synonyms:	BP-1, 4EBP1, 4E-BP1, PHAS-I, Phospho-eIF4EBP1-T37/T46
Clone:	ARC56491
Applications:	WB ELISA
Conjugation:	Unconjugated
Reactivity:	Human, Rat

Antibody Data

Gene ID:	1978
Uniprot:	-
Host Species:	Rabbit
Purification:	Affinity purification
Observed MW:	15-20kDa
Calculated MW:	13kDa

Preparation & Storage

Storage: Store at -20°C. Avoid freeze / thaw cycles. Buffer: PBS with 0.09% Sodium azide, 0.05% BSA, 50% glycerol, pH 7.3.

Store Bradford Reagent at Room Temperature for 1 Year.

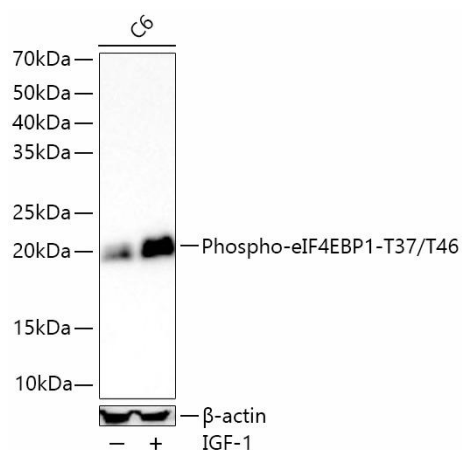
Positive Sample: C6 treated with IGF-1, HeLa treated with insulin

Recommended Dilutions:

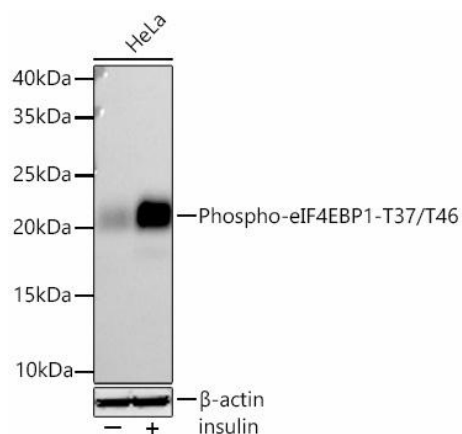
WB	1:1000 - 1:8000
ELISA	Recommended starting concentration is 1 µg/mL. Please optimize the concentration based on your specific assay requirements.

Protein Quantification (Optional): To quantify total protein levels, use the Bradford Reagent included in this kit. Visit <https://www.assaygenie.com/bradford-protein-assay-protocol/> to view the full protocol

Validation Data



Western blot analysis of lysates from cells using Phospho-eIF4EBP1-/ Rabbit mAb (CABP1381) at 1:7000 dilution incubated overnight at 4°C. cells were treated with IGF-1 (100 ng/mL) at 37°C for 30 minutes after serum-starvation overnight. Secondary antibody: HRP-conjugated Goat anti-Rabbit IgG (H+L) (CABS014) at 1:10000 dilution. Lysates/proteins: 30 µg per lane. Blocking buffer: 3% nonfat dry milk in TBST. Detection: ECL Basic Kit (AbGn00020). Exposure time: 180s.



Western blot analysis of lysates from HeLa cells using Phospho-eIF4EBP1-/ Rabbit mAb (CABP1381) at 1:1000 dilution incubated overnight at 4°C. HeLa cells were treated with insulin (100 nM) at 37°C for 30 minutes. Secondary antibody: HRP-conjugated Goat anti-Rabbit IgG (H+L) (CABS014) at 1:10000 dilution. Lysates/proteins: 30 µg per lane. Blocking buffer: 3% nonfat dry milk in TBST. Detection: ECL Basic Kit (AbGn00020). Exposure time: 90s.