

Phospho-Cardiac Troponin I (TNNI3)-S23/S24 Monoclonal Antibody

CABP1400

Description

This Phospho-Cardiac Troponin I (TNNI3)-S23/S24 Monoclonal Antibody is supplied as a kit for advanced applications. The kit includes Bradford Reagent to quantify total protein concentration for accurate sample normalization (Optional).

Product Information

| | |
|----------------------|--|
| SKU: | CABP1400 |
| Contents: | 20 µL, 100 µL Bradford Reagent: 1 vial (2ml) |
| Category: | Monoclonal Antibody |
| Synonyms: | CMH7, RCM1, cTnI, CMD2A, TNNC1, CMD1FF, Phospho-Cardiac Troponin I (TNNI3)-S23/S24 |
| Clone: | ARC56024 |
| Applications: | IHC-P ELISA |
| Conjugation: | Unconjugated |
| Reactivity: | Human |

Antibody Data

| | |
|-----------------------|-----------------------|
| Gene ID: | 7137 |
| Uniprot: | - |
| Host Species: | Rabbit |
| Purification: | Affinity purification |
| Observed MW: | Refer to figures |
| Calculated MW: | 24kDa |

Preparation & Storage

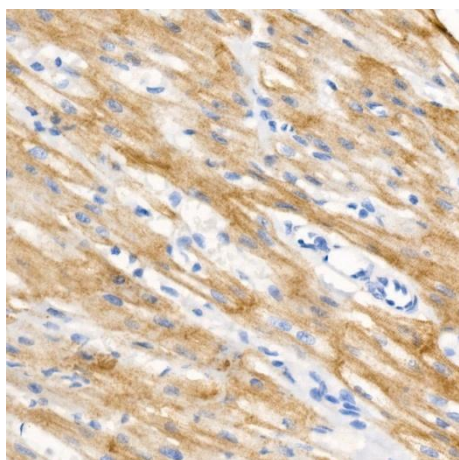
Storage: Store at -20°C. Avoid freeze / thaw cycles. Buffer: PBS containing 50% glycerol and 0.05% BSA, preserved with proclin300 or sodium azide (as specified on the Certificate of Analysis), pH 7.3.
Store Bradford Reagent at Room Temperature for 1 Year.

Positive Sample: -

| | | |
|-------------------------------|--------------|---|
| Recommended Dilutions: | IHC-P | 1:500 - 1:1000 |
| | ELISA | Recommended starting concentration is 1 µg/mL. Please optimize the concentration based on your specific assay requirements. |

Protein Quantification (Optional): To quantify total protein levels, use the Bradford Reagent included in this kit. Visit <https://www.assaygenie.com/bradford-protein-assay-protocol/> to view the full protocol

Validation Data



Immunohistochemistry analysis of paraffin-embedded Human heart using Phospho-Cardiac Troponin I (TNNI3)-/ Rabbit mAb (CABP1400) at dilution of 1:700 (40x lens). High pressure antigen retrieval performed with 0.01M Citrate buffer (pH 6.0) prior to IHC staining.