

Phospho-Myosin Light Chain 2-T18 Monoclonal Antibody

CABP1439

Description

This Phospho-Myosin Light Chain 2-T18 Monoclonal Antibody is supplied as a kit for advanced applications. The kit includes Bradford Reagent to quantify total protein concentration for accurate sample normalization (Optional).

Product Information

SKU:	CABP1439
Contents:	20 μ L, 100 μ L Bradford Reagent: 1 vial (2ml)
Category:	Monoclonal Antibody
Synonyms:	LC20, MLC2, MRLC1, MYRL2, MLC-2C, MMIHS4, Phospho-Myosin Light Chain 2-T18
Clone:	ARC62064
Applications:	WB ELISA
Conjugation:	Unconjugated
Reactivity:	Human

Antibody Data

Gene ID:	10398
Uniprot:	-
Host Species:	Rabbit
Purification:	Affinity purification
Observed MW:	18kDa
Calculated MW:	20kDa

Preparation & Storage

Storage: Store at -20°C. Avoid freeze / thaw cycles. Buffer: PBS containing 50% glycerol and 0.05% BSA, preserved with proclin300 or sodium azide (as specified on the Certificate of Analysis), pH 7.3.

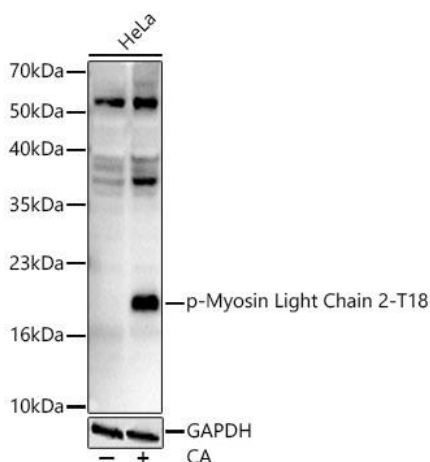
Store Bradford Reagent at Room Temperature for 1 Year.

Positive Sample: HeLa treated with Calyculin A

Recommended Dilutions:	WB	1:500 - 1:1000
	ELISA	Recommended starting concentration is 1 µg/mL. Please optimize the concentration based on your specific assay requirements.

Protein Quantification (Optional): To quantify total protein levels, use the Bradford Reagent included in this kit. Visit <https://www.assaygenie.com/bradford-protein-assay-protocol/> to view the full protocol

Validation Data



Western blot analysis of lysates from HeLa cells, using Phospho-Myosin Light Chain 2- Rabbit mAb (CABP1439) at 1:1000 dilution. HeLa cells were treated with Calyculin A (100 nM) at 37°C for 30 minutes after serum-starvation overnight. Secondary antibody: HRP-conjugated Goat anti-Rabbit IgG (H+L) (CABS014) at 1:10000 dilution. Lysates/proteins: 25µg per lane. Blocking buffer: 3% nonfat dry milk in TBST. Detection: ECL Enhanced Kit (AbGn00021). Exposure time: 90s.