

## Phospho-AMPKalpha1-T183+AMPKalpha2-T172 Monoclonal Antibody

CABP1441

### Description

---

This Phospho-AMPKalpha1-T183+AMPKalpha2-T172 Monoclonal Antibody is supplied as a kit for advanced applications. The kit includes Bradford Reagent to quantify total protein concentration for accurate sample normalization (Optional).

### Product Information

---

<b>SKU:</b>	CABP1441
<b>Contents:</b>	20 µL, 100 µL Bradford Reagent: 1 vial (2ml)
<b>Category:</b>	Monoclonal Antibody
<b>Synonyms:</b>	AMPKa1/AMPKa2, Phospho-AMPKa1-T183+AMPKa2-T172
<b>Clone:</b>	ARC62278
<b>Applications:</b>	<span>WB</span> <span>ELISA</span>
<b>Conjugation:</b>	-
<b>Reactivity:</b>	Human, Mouse, Rat

### Antibody Data

---

<b>Gene ID:</b>	5562 5563
<b>Uniprot:</b>	-
<b>Host Species:</b>	Rabbit
<b>Purification:</b>	Affinity purification
<b>Observed MW:</b>	62kDa/
<b>Calculated MW:</b>	64kDa/65kDa/62kDa

## Preparation & Storage

**Storage:** Store at -20°C. Avoid freeze / thaw cycles. Buffer: PBS with 0.09% Sodium azide, 0.05% BSA, 50% glycerol, pH 7.3.

Store Bradford Reagent at Room Temperature for 1 Year.

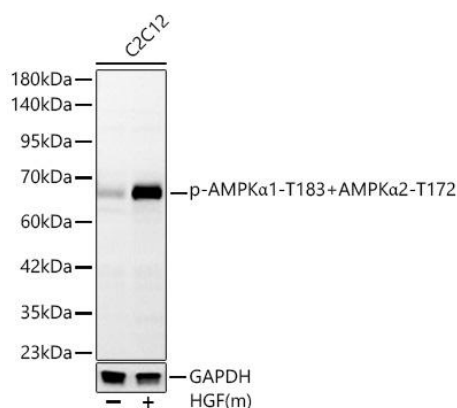
**Positive Sample:** C2C12 treated with mHGF, C6 treated with AICAR, 293T treated with CA

**Recommended Dilutions:**

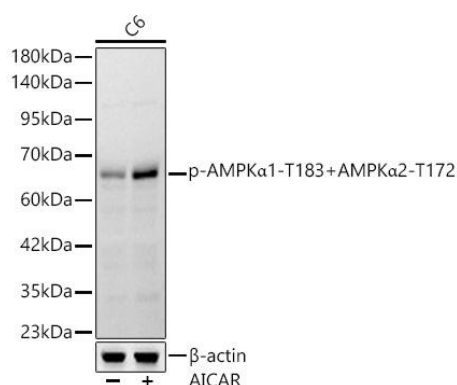
<b>WB</b>	1:1000 - 1:5000
<b>ELISA</b>	Recommended starting concentration is 1 µg/mL. Please optimize the concentration based on your specific assay requirements.

**Protein Quantification (Optional):** To quantify total protein levels, use the Bradford Reagent included in this kit. Visit <https://www.assaygenie.com/bradford-protein-assay-protocol/> to view the full protocol

## Validation Data



Western blot analysis of lysates from C2C12 cells, using Phospho-AMPKα1-+AMPKα2- Rabbit mAb (CABP1441) at 1:1000 dilution. C2C12 cells were treated with mHGF(50ng/uL). Secondary antibody: HRP-conjugated Goat anti-Rabbit IgG (H+L) (CABS014) at 1:10000 dilution. Lysates/proteins: 25µg per lane. Blocking buffer: 3% nonfat dry milk in TBST. Detection: ECL Basic Kit (AbGn00020). Exposure time: 30s.



Western blot analysis of lysates from cells, using Phospho-AMPKα1-+AMPKα2- Rabbit mAb (CABP1441) at 1:1000 dilution. cells were treated with AICAR (0.5 mM) at 37°C for 30 minutes after serum-starvation overnight. Secondary antibody: HRP-conjugated Goat anti-Rabbit IgG (H+L) (CABS014) at 1:10000 dilution. Lysates/proteins: 25µg per lane. Blocking buffer: 3% nonfat dry milk in TBST. Detection: ECL Basic Kit (AbGn00020). Exposure time: 30s.