

HRP-conjugated Goat anti-Human IgG (H+L)

CABS002

Description

This HRP-conjugated Goat anti-Human IgG (H+L) is supplied as a kit for advanced applications. The kit includes Bradford Reagent to quantify total protein concentration for accurate sample normalization (Optional).

Product Information

SKU:	CABS002
Contents:	20 µL, 100 µL Bradford Reagent: 1 vial (2ml)
Category:	
Synonyms:	-
Clone:	-
Applications:	WB
Conjugation:	HRP
Reactivity:	Human

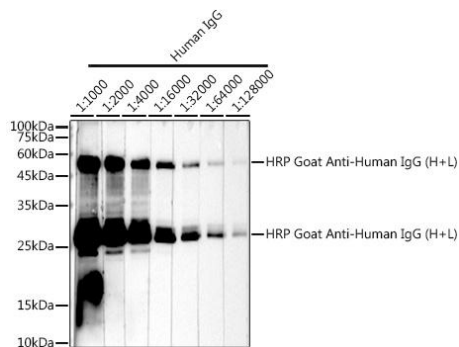
Antibody Data

Gene ID:	-
Uniprot:	AB_2769850
Host Species:	Human
Purification:	Affinity purification
Observed MW:	25kDa,55kDa
Calculated MW:	-

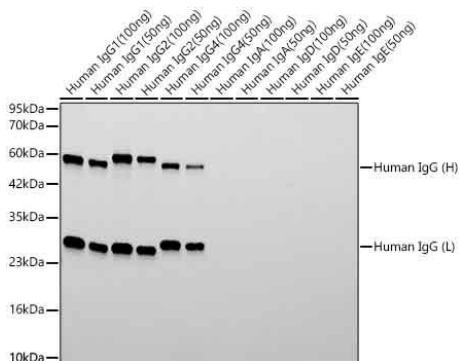
Preparation & Storage

Storage:	Store at -20°C. Avoid freeze / thaw cycles. Buffer: 0.01M Sodium Phosphate, 0.25M NaCl, 15 mg/ml Bovine Serum Albumin (IgG-Free, Protease-Free), pH 7.6 Store Bradford Reagent at Room Temperature for 1 Year.
Positive Sample:	Human IgG1, Human IgG2, Human IgG4
Recommended Dilutions:	N/A
Protein Quantification (Optional):	To quantify total protein levels, use the Bradford Reagent included in this kit. Visit https://www.assaygenie.com/bradford-protein-assay-protocol/ to view the full protocol

Validation Data



Western blot analysis of lysates from Human IgG, using HRP Goat Anti-Human IgG (H+L) (CABS002) at 1:2000 dilution. Lysates/proteins: 25µg per lane. Blocking buffer: 3% nonfat dry milk in TBST. Detection: ECL Basic Kit (AbGn00020). Exposure time: 90s.



Western blot analysis of recombinant Human immunoglobulin using HRP Goat Anti-Human IgG (H+L) (CABS002) at 1:10000 dilution incubated overnight at 4°C. Lysates/proteins: 50ng - 100ng per lane. Blocking buffer: 3% nonfat dry milk in TBST. Detection: ECL Basic Kit (AbGn00020). Exposure time: 20s.