

FITC-conjugated Goat anti-Rabbit IgG (H+L)

CABS011

Description

This FITC-conjugated Goat anti-Rabbit IgG (H+L) is supplied as a kit for advanced applications. The kit includes Bradford Reagent to quantify total protein concentration for accurate sample normalization (Optional).

Product Information

SKU:	CABS011
Contents:	20 µL, 100 µL Bradford Reagent: 1 vial (2ml)
Category:	
Synonyms:	-
Clone:	-
Applications:	IF/ICC FC
Conjugation:	FITC. Ex:491nm. Em:516nm.
Reactivity:	Rabbit

Antibody Data

Gene ID:	-
Uniprot:	AB_2769476
Host Species:	Rabbit
Purification:	Affinity purification
Observed MW:	-
Calculated MW:	-

Preparation & Storage

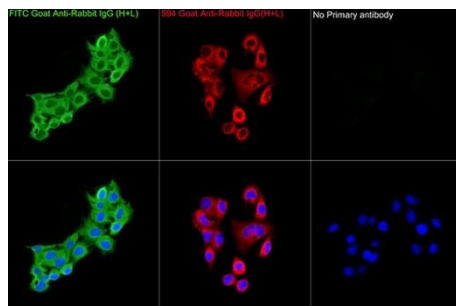
Storage: Store at -20°C. Avoid freeze / thaw cycles. Buffer: PBS with 0.025% Sodium Azide, 0.75% BSA, 50% glycerol, pH 7.3.
Store Bradford Reagent at Room Temperature for 1 Year.

Positive Sample: -

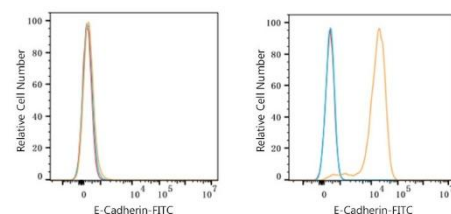
Recommended Dilutions:	IF/ICC	1:50 - 1:200
	FC	1:50 - 1:200

Protein Quantification (Optional): To quantify total protein levels, use the Bradford Reagent included in this kit. Visit <https://www.assaygenie.com/bradford-protein-assay-protocol/> to view the full protocol

Validation Data



Immunofluorescence analysis of Hep cells using ACLY Rabbit pAb (CAB15251) target='_blank'>CAB15251) at a dilution of 1:100 (40x lens). Secondary antibody: FITC Goat Anti-Rabbit IgG (H+L) (CAB15251' target='_blank'>CAB15251)/594 Goat Anti-Rabbit IgG(H+L) at 1:100 dilution. Blue: DAPI for nuclear staining.



Flow cytometry: 1×10^6 K-562 cells (negative control, left) and A-431 cells (right) were surface-stained with Purified Rabbit anti-Human E-Cadherin mAb (5 µl/Test, orange line) or secondary antibody only (blue line). Non-fluorescently stained K-562 and A-431 cells were used as blank control (red line). FITC Goat Anti-Rabbit IgG (H+L) (CABS011, 1:200) was used as a secondary antibody.