

## HRP-conjugated Goat anti-Rabbit IgG (H+L)

CABS014

### Description

---

This HRP-conjugated Goat anti-Rabbit IgG (H+L) is supplied as a kit for advanced applications. The kit includes Bradford Reagent to quantify total protein concentration for accurate sample normalization (Optional).

### Product Information

---

<b>SKU:</b>	CABS014
<b>Contents:</b>	20 µL, 100 µL Bradford Reagent: 1 vial (2ml)
<b>Category:</b>	
<b>Synonyms:</b>	-
<b>Clone:</b>	-
<b>Applications:</b>	WB IHC-P ELISA DB
<b>Conjugation:</b>	HRP
<b>Reactivity:</b>	Rabbit

### Antibody Data

---

<b>Gene ID:</b>	-
<b>Uniprot:</b>	AB_2769854
<b>Host Species:</b>	Rabbit
<b>Purification:</b>	Affinity purification
<b>Observed MW:</b>	-
<b>Calculated MW:</b>	-

## Preparation & Storage

**Storage:** Store at -20°C. Avoid freeze / thaw cycles. Buffer: PBS with 0.75% BSA, 50% glycerol, pH 7.3.

Store Bradford Reagent at Room Temperature for 1 Year.

**Positive Sample:** -

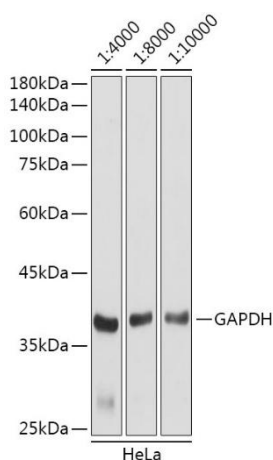
**Recommended Dilutions:**

<b>WB</b>	1:2000 - 1:10000
<b>DB</b>	1:2000 - 1:10000
<b>IHC-P</b>	1:50 - 1:200
<b>ELISA</b>	1:5000 - 1:10000

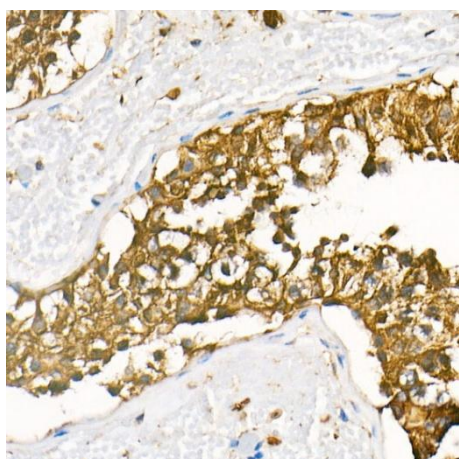
**Protein Quantification (Optional):**

To quantify total protein levels, use the Bradford Reagent included in this kit. Visit <https://www.assaygenie.com/bradford-protein-assay-protocol/> to view the full protocol

## Validation Data



Western blot analysis of lysates from HeLa cells, using GAPDH (CABC001) antibody as the primary antibody at dilution of 1:80000. Secondary antibody: using HRP Goat Anti-Rabbit IgG (H+L) antibody (CABS014) at 1:4000-1:10000 dilution. Lysates/proteins: 25µg per lane. Blocking buffer: 3% nonfat dry milk in TBST. Detection: ECL Basic Kit (AbGn00020). Exposure time: 3s.



Immunohistochemistry analysis of paraffin-embedded Human testis tissue using HRP Goat Anti-Rabbit IgG (H+L) (CABS014) at a dilution of 1:100 (40x lens). High pressure antigen retrieval was performed with 0.01 M citrate buffer (pH 6.0) prior to IHC staining.