

## FITC-conjugated Goat anti-Rat IgG (H+L)

CABS019

### Description

---

This FITC-conjugated Goat anti-Rat IgG (H+L) is supplied as a kit for advanced applications. The kit includes Bradford Reagent to quantify total protein concentration for accurate sample normalization (Optional).

### Product Information

---

<b>SKU:</b>	CABS019
<b>Contents:</b>	20 µL, 100 µL Bradford Reagent: 1 vial (2ml)
<b>Category:</b>	
<b>Synonyms:</b>	-
<b>Clone:</b>	-
<b>Applications:</b>	IF/ICC FC
<b>Conjugation:</b>	FITC. Ex:491nm. Em:516nm.
<b>Reactivity:</b>	Rat

### Antibody Data

---

<b>Gene ID:</b>	-
<b>Uniprot:</b>	AB_2769477
<b>Host Species:</b>	Rat
<b>Purification:</b>	Affinity purification
<b>Observed MW:</b>	-
<b>Calculated MW:</b>	-

## Preparation & Storage

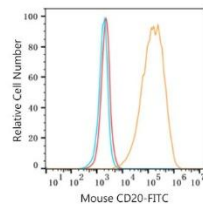
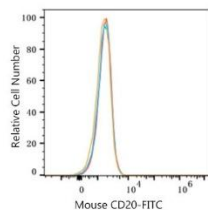
**Storage:** Store at -20°C. Avoid freeze / thaw cycles. Buffer: PBS with 0.025% Sodium Azide, 0.75% BSA, 50% glycerol, pH 7.3.  
Store Bradford Reagent at Room Temperature for 1 Year.

**Positive Sample:** -

<b>Recommended Dilutions:</b>	<b>IF/ICC</b>	1:50 - 1:200
	<b>FC</b>	1:50 - 1:200

**Protein Quantification (Optional):** To quantify total protein levels, use the Bradford Reagent included in this kit. Visit <https://www.assaygenie.com/bradford-protein-assay-protocol/> to view the full protocol

## Validation Data



Flow cytometry:  $1 \times 10^6$  cells (negative control, left) and -transfection cells (right) were surface-stained with rat anti-mouse Antibody (1:100, orange line) or secondary antibody only (blue line). Non-fluorescently stained and transfection cells were used as blank control (red line). FITC Goat Anti-Rat IgG (H+L) (CABS019, 1:100) was used as a secondary antibody.