

HRP-conjugated Goat anti-Rat IgG (H+L)

CABS028

Description

This HRP-conjugated Goat anti-Rat IgG (H+L) is supplied as a kit for advanced applications. The kit includes Bradford Reagent to quantify total protein concentration for accurate sample normalization (Optional).

Product Information

SKU:	CABS028
Contents:	20 µL, 100 µL Bradford Reagent: 1 vial (2ml)
Category:	
Synonyms:	-
Clone:	-
Applications:	WB IHC-P
Conjugation:	HRP
Reactivity:	Rat

Antibody Data

Gene ID:	-
Uniprot:	AB_2769855
Host Species:	Rat
Purification:	Affinity purification
Observed MW:	-
Calculated MW:	-

Preparation & Storage

Storage: Store at -20°C. Avoid freeze / thaw cycles. Buffer: PBS with 0.75% BSA, 50% glycerol, pH 7.3.

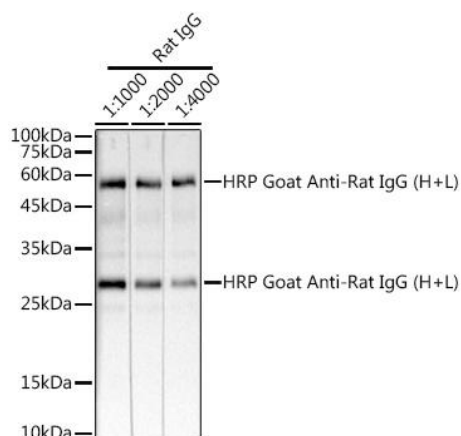
Store Bradford Reagent at Room Temperature for 1 Year.

Positive Sample: Rabbit IgG, Mouse IgG, Rat IgG

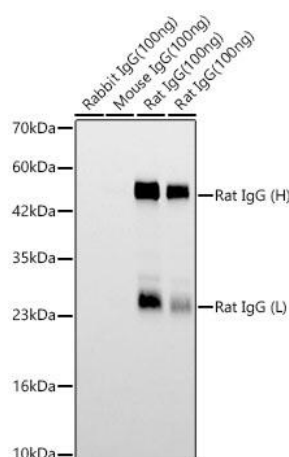
Recommended Dilutions:	WB	1:5000 - 1:10000
	IHC-P	1:500 - 1:2000

Protein Quantification (Optional): To quantify total protein levels, use the Bradford Reagent included in this kit. Visit <https://www.assaygenie.com/bradford-protein-assay-protocol/> to view the full protocol

Validation Data



Western blot analysis of lysates from Rat IgG, using HRP Goat Anti-Rat IgG (H+L) (CABS028) at 1:1000 dilution. Lysates/proteins: 25µg per lane. Blocking buffer: 3% nonfat dry milk in TBST. Detection: ECL Basic Kit (AbGn00020). Exposure time: 10s.



Western blot analysis of lysates from Rat IgG using HRP Goat Anti-Rat IgG (H+L) (CABS028) at 1:5000 dilution. Lysates/proteins: 50ng - 100ng per lane. Blocking buffer: 3% nonfat dry milk in TBST. Detection: ECL Basic Kit (AbGn00020). Exposure time: 30s.