

## HRP-conjugated Rabbit anti-Chicken IgY (IgG) (H+L)

CABS030

### Description

---

This HRP-conjugated Rabbit anti-Chicken IgY (IgG) (H+L) is supplied as a kit for advanced applications. The kit includes Bradford Reagent to quantify total protein concentration for accurate sample normalization (Optional).

### Product Information

---

<b>SKU:</b>	CABS030
<b>Contents:</b>	20 µL, 100 µL Bradford Reagent: 1 vial (2ml)
<b>Category:</b>	
<b>Synonyms:</b>	-
<b>Clone:</b>	-
<b>Applications:</b>	<span>WB</span> <span>IHC-P</span> <span>ELISA</span>
<b>Conjugation:</b>	HRP
<b>Reactivity:</b>	Chicken

### Antibody Data

---

<b>Gene ID:</b>	-
<b>Uniprot:</b>	AB_2769858
<b>Host Species:</b>	Rabbit
<b>Purification:</b>	Affinity purification
<b>Observed MW:</b>	22-30kDa(Light chain),60-70kDa(Heavy chain)/30kDa(Light chain),70kDa(Heavy chain)
<b>Calculated MW:</b>	-

## Preparation & Storage

**Storage:** Store at -20°C. Avoid freeze / thaw cycles. Buffer: PBS with 0.75% BSA, 50% glycerol, pH 7.3.

Store Bradford Reagent at Room Temperature for 1 Year.

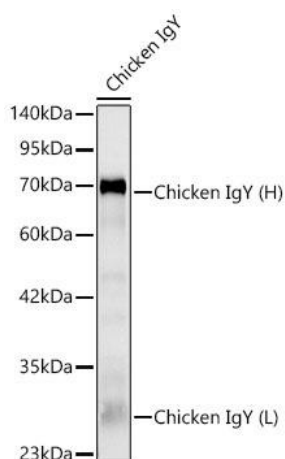
**Positive Sample:** Chicken IgY,

**Recommended Dilutions:**

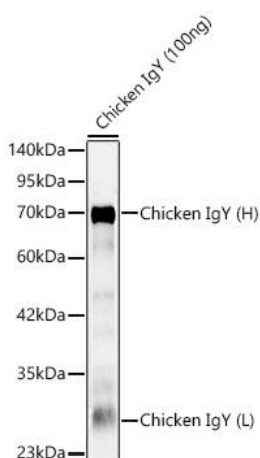
<b>WB</b>	1:10000 - 1:50000
<b>IHC-P</b>	1:500 - 1:5000
<b>ELISA</b>	1:10000 - 1:200000

**Protein Quantification (Optional):** To quantify total protein levels, use the Bradford Reagent included in this kit. Visit <https://www.assaygenie.com/bradford-protein-assay-protocol/> to view the full protocol

## Validation Data



Western blot analysis of lysates from Chicken IgY using HRP Rabbit Anti-Chicken IgY (IgG) (H+L) (CABS030) at 1:5000 dilution. Lysates/proteins: 50ng - 100ng per lane. Blocking buffer: 3% nonfat dry milk in TBST. Detection: ECL Basic Kit (AbGn00020). Exposure time: 30s.



Western blot analysis of lysates from Chicken IgY using HRP Rabbit Anti-Chicken IgY (IgG) (H+L) (CABS030) at 1:5000 dilution. Lysates/proteins: 100ng per lane. Blocking buffer: 3% nonfat dry milk in TBST. Detection: ECL Basic Kit (AbGn00020). Exposure time: 30s.