

HRP-conjugated Donkey anti-Rabbit IgG (H+L)

CABS038

Description

This HRP-conjugated Donkey anti-Rabbit IgG (H+L) is supplied as a kit for advanced applications. The kit includes Bradford Reagent to quantify total protein concentration for accurate sample normalization (Optional).

Product Information

SKU:	CABS038
Contents:	20 µL, 100 µL Bradford Reagent: 1 vial (2ml)
Category:	
Synonyms:	-
Clone:	-
Applications:	WB IHC-P
Conjugation:	HRP
Reactivity:	Rabbit

Antibody Data

Gene ID:	-
Uniprot:	AB_2769848
Host Species:	Rabbit
Purification:	Affinity purification
Observed MW:	42kDa
Calculated MW:	-

Preparation & Storage

Storage: Store at -20°C. Avoid freeze / thaw cycles. Buffer: PBS with 0.75% BSA, 50% glycerol, pH 7.3.

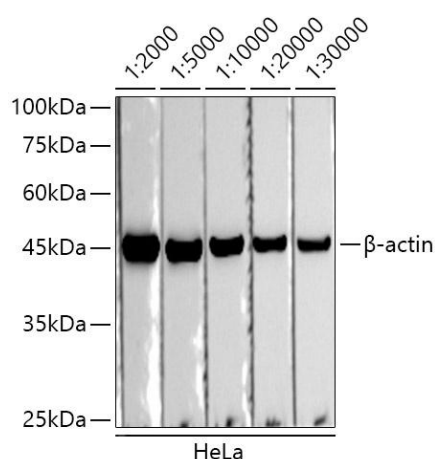
Store Bradford Reagent at Room Temperature for 1 Year.

Positive Sample: HeLa

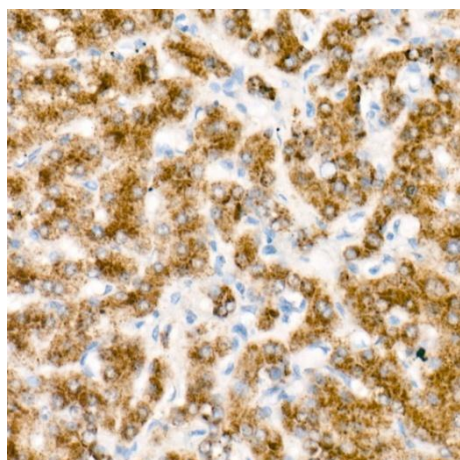
Recommended Dilutions:	WB	1:5000 - 1:100000
	IHC-P	1:50 - 1:200

Protein Quantification (Optional): To quantify total protein levels, use the Bradford Reagent included in this kit. Visit <https://www.assaygenie.com/bradford-protein-assay-protocol/> to view the full protocol

Validation Data



Western blot analysis of lysates from HeLa cells, using β-actin antibody as the primary antibody. Secondary antibody: HRP Donkey Anti-Rabbit IgG (H+L) antibody (CABS038) at 1:2000-1:30000 dilution. Lysates/proteins: 25μg per lane. Blocking buffer: 3% nonfat dry milk in TBST. Detection: ECL Basic Kit (AbGn00020). Exposure time: 30s.



Immunohistochemistry analysis of paraffin-embedded Human liver (primary antibody is acox1) using HRP Donkey Anti-Rabbit IgG (H+L) (CABS038) at dilution of 1:100 (40x lens). High pressure antigen retrieval performed with 0.01M Citrate buffer (pH 6.0) prior to IHC staining.