

## Rhodamine (TRITC)-conjugated Goat anti-Rabbit IgG (H+L)

CABS040

### Description

---

This Rhodamine (TRITC)-conjugated Goat anti-Rabbit IgG (H+L) is supplied as a kit for advanced applications. The kit includes Bradford Reagent to quantify total protein concentration for accurate sample normalization (Optional).

### Product Information

---

<b>SKU:</b>	CABS040
<b>Contents:</b>	20 µL, 100 µL Bradford Reagent: 1 vial (2ml)
<b>Category:</b>	
<b>Synonyms:</b>	-
<b>Clone:</b>	-
<b>Applications:</b>	IHC-P IF/ICC FC
<b>Conjugation:</b>	Rhodamine. Ex:550nm. Em:570nm.
<b>Reactivity:</b>	Rabbit

### Antibody Data

---

<b>Gene ID:</b>	-
<b>Uniprot:</b>	AB_2772013
<b>Host Species:</b>	Rabbit
<b>Purification:</b>	Affinity purification
<b>Observed MW:</b>	-
<b>Calculated MW:</b>	-

## Preparation & Storage

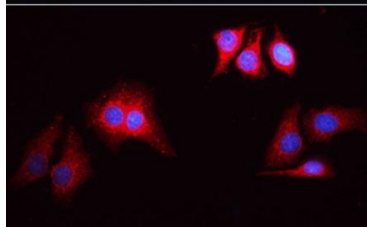
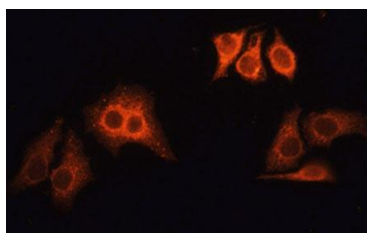
**Storage:** Store at -20°C. Avoid freeze / thaw cycles. Buffer: PBS with 0.025% Sodium Azide, 0.75% BSA, 50% glycerol, pH 7.3.  
Store Bradford Reagent at Room Temperature for 1 Year.

**Positive Sample:** -

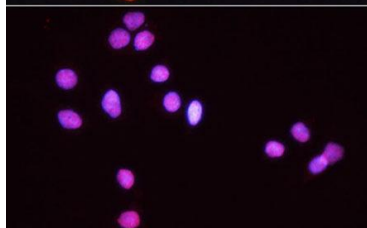
<b>Recommended Dilutions:</b>	<b>IHC-P</b>	1:50 - 1:200
	<b>IF/ICC</b>	1:50 - 1:200
	<b>FC</b>	1:50 - 1:200

**Protein Quantification (Optional):** To quantify total protein levels, use the Bradford Reagent included in this kit. Visit <https://www.assaygenie.com/bradford-protein-assay-protocol/> to view the full protocol

## Validation Data



Immunofluorescence analysis of HeLa cells, using Rhodamine (TRITC) Goat Anti-Rabbit IgG (H+L) (CAB3716) as the primary antibody at dilution of 1:100. The cells were incubated with the primary antibody overnight at 4°C. Secondary antibody: Rhodamine (TRITC) Goat Anti-Rabbit IgG (H+L) (CABS040) at 1:200 dilution. Blue: DAPI for nuclear staining.



Immunofluorescence analysis of HeLa cells, using Rhodamine (TRITC) Goat Anti-Rabbit IgG (H+L) (CAB0942) as the primary antibody at dilution of 1:100. The cells were incubated with the primary antibody overnight at 4°C. Secondary antibody: Rhodamine (TRITC) Goat Anti-Rabbit IgG (H+L) (CABS040) at 1:100 dilution. Blue: DAPI for nuclear staining.