

FITC-conjugated Donkey anti-Rabbit IgG (H+L)

CABS042

Description

This FITC-conjugated Donkey anti-Rabbit IgG (H+L) is supplied as a kit for advanced applications. The kit includes Bradford Reagent to quantify total protein concentration for accurate sample normalization (Optional).

Product Information

SKU:	CABS042
Contents:	20 µL, 100 µL Bradford Reagent: 1 vial (2ml)
Category:	
Synonyms:	-
Clone:	-
Applications:	IF/ICC FC
Conjugation:	FITC. Ex:491nm. Em:516nm.
Reactivity:	Rabbit

Antibody Data

Gene ID:	-
Uniprot:	AB_2769474
Host Species:	Rabbit
Purification:	Affinity purification
Observed MW:	-
Calculated MW:	-

Preparation & Storage

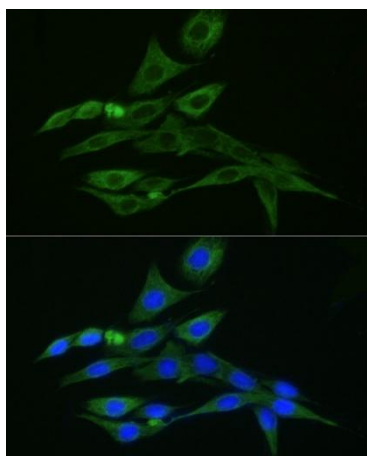
Storage: Store at -20°C. Avoid freeze / thaw cycles. Buffer: PBS with 0.025% Sodium Azide, 0.75% BSA, 50% glycerol, pH 7.3.
Store Bradford Reagent at Room Temperature for 1 Year.

Positive Sample: -

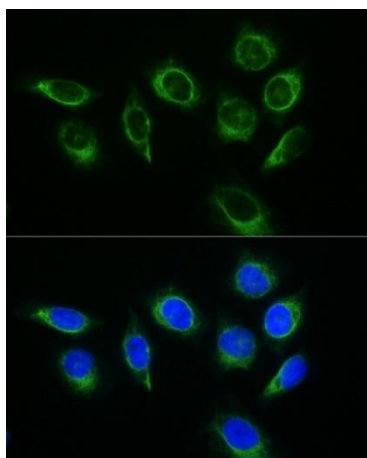
Recommended Dilutions:	IF/ICC	1:50 - 1:200
	FC	1:50 - 1:200

Protein Quantification (Optional): To quantify total protein levels, use the Bradford Reagent included in this kit. Visit <https://www.assaygenie.com/bradford-protein-assay-protocol/> to view the full protocol

Validation Data



Immunofluorescence analysis of PC-12 cells using Vimentin Rabbit mAb (CAB19607) at a dilution of 1:100 (40x lens). Secondary antibody: FITC Donkey Anti-Rabbit IgG (H+L) (CABS042) at dilution of 1:200 (40x lens). Blue: DAPI for nuclear staining.



Immunofluorescence analysis of HeLa cells using Vimentin Rabbit mAb (CAB19607) at a dilution of 1:100 (40x lens). Secondary antibody: FITC Donkey Anti-Rabbit IgG (H+L) (CABS042) at dilution of 1:200 (40x lens). Blue: DAPI for nuclear staining.