

## HRP-conjugated Mouse anti-Rabbit IgG Light Chain

CABS061

### Description

---

This HRP-conjugated Mouse anti-Rabbit IgG Light Chain is supplied as a kit for advanced applications. The kit includes Bradford Reagent to quantify total protein concentration for accurate sample normalization (Optional).

### Product Information

---

<b>SKU:</b>	CABS061
<b>Contents:</b>	20 $\mu$ L, 100 $\mu$ L Bradford Reagent: 1 vial (2ml)
<b>Category:</b>	
<b>Synonyms:</b>	-
<b>Clone:</b>	AMC0531
<b>Applications:</b>	<span>WB</span> <span>IP</span>
<b>Conjugation:</b>	HRP
<b>Reactivity:</b>	Rabbit

### Antibody Data

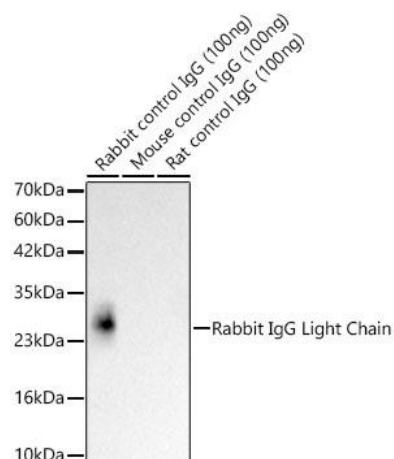
---

<b>Gene ID:</b>	-
<b>Uniprot:</b>	AB_2864055
<b>Host Species:</b>	Rabbit
<b>Purification:</b>	Affinity purification
<b>Observed MW:</b>	25kDa(Light chain)
<b>Calculated MW:</b>	-

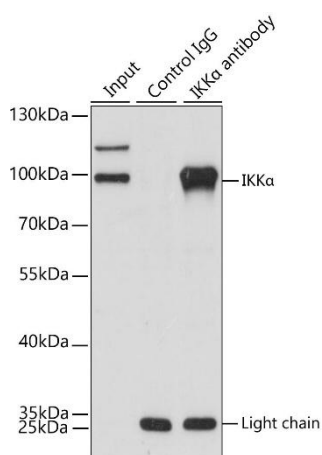
## Preparation & Storage

<b>Storage:</b>	Store at -20°C. Avoid freeze / thaw cycles. Buffer: PBS with 0.75% BSA, 50% glycerol, pH 7.3. Store Bradford Reagent at Room Temperature for 1 Year.
<b>Positive Sample:</b>	Rabbit control IgG
<b>Recommended Dilutions:</b>	N/A
<b>Protein Quantification (Optional):</b>	To quantify total protein levels, use the Bradford Reagent included in this kit. Visit <a href="https://www.assaygenie.com/bradford-protein-assay-protocol/">https://www.assaygenie.com/bradford-protein-assay-protocol/</a> to view the full protocol

## Validation Data



Western blot analysis of recombinant Rabbit/Mouse/Rat control IgG Protein using HRP-conjugated Mouse Anti-Rabbit IgG Light Chain (CABS061) at 1:10000 dilution. Lysates/proteins: 100 ng per lane. Blocking buffer: 3% nonfat dry milk in TBST. Detection: ECL Basic Kit (AbGn00020). Exposure time: 90s.



Immunoprecipitation analysis of 200 µg extracts of 293T cells using 3 µg IKKα antibody (CAB2062' target='\_blank' >CAB2062). Western blot was performed from the immunoprecipitate using IKKα antibody (CAB2062' target='\_blank' >CAB2062) at a dilution of 1:1000. Secondary antibody: HRP-conjugated AffiniPure Mouse Anti-Rabbit IgG Light Chain (CABS061) at 1:20000 dilution.