

Rabbit Anti-Goat IgG (H+L)

CABS081

Description

This Rabbit Anti-Goat IgG (H+L) is supplied as a kit for advanced applications. The kit includes Bradford Reagent to quantify total protein concentration for accurate sample normalization (Optional).

Product Information

| | |
|----------------------|--|
| SKU: | CABS081 |
| Contents: | 20 µL, 100 µL Bradford Reagent: 1 vial (2ml) |
| Category: | |
| Synonyms: | - |
| Clone: | - |
| Applications: | WB |
| Conjugation: | Unconjugated |
| Reactivity: | Goat |

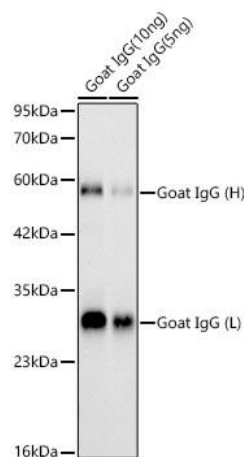
Antibody Data

| | |
|-----------------------|---------------------------------------|
| Gene ID: | - |
| Uniprot: | - |
| Host Species: | Rabbit |
| Purification: | Affinity purification |
| Observed MW: | 25kDa(Light chain),55kDa(Heavy chain) |
| Calculated MW: | - |

Preparation & Storage

| | |
|---|--|
| Storage: | Store at -20°C. Avoid freeze / thaw cycles. Buffer: PBS containing 50% glycerol, preserved with proclin300 or sodium azide (as specified on the Certificate of Analysis), pH 7.3. Store Bradford Reagent at Room Temperature for 1 Year. |
| Positive Sample: | Goat IgG |
| Recommended Dilutions: | N/A |
| Protein Quantification (Optional): | To quantify total protein levels, use the Bradford Reagent included in this kit. Visit https://www.assaygenie.com/bradford-protein-assay-protocol/ to view the full protocol |

Validation Data



Western blot analysis of Goat IgG using Rabbit Anti-Goat IgG (H+L) (CABS081) at 1:1000 dilution. Lysates/proteins: 5 ng - 10 ng per lane. Blocking buffer: 3% nonfat dry milk in TBST. Detection: ECL Basic Kit (AbGn00020). Exposure time: 60s.