

## FITC-conjugated F(ab')<sub>2</sub> Fragment Goat anti-Rabbit IgG, Fc fragment specific

CABS083

### Description

---

This FITC-conjugated F(ab')<sub>2</sub> Fragment Goat anti-Rabbit IgG, Fc fragment specific is supplied as a kit for advanced applications. The kit includes Bradford Reagent to quantify total protein concentration for accurate sample normalization (Optional).

### Product Information

---

<b>SKU:</b>	CABS083
<b>Contents:</b>	20 µL, 100 µL Bradford Reagent: 1 vial (2ml)
<b>Category:</b>	
<b>Synonyms:</b>	-
<b>Clone:</b>	-
<b>Applications:</b>	IF/ICC FC IF-P
<b>Conjugation:</b>	FITC. Ex:491nm. Em:516nm.
<b>Reactivity:</b>	Rabbit

### Antibody Data

---

<b>Gene ID:</b>	-
<b>Uniprot:</b>	-
<b>Host Species:</b>	Rabbit
<b>Purification:</b>	Affinity purification
<b>Observed MW:</b>	-
<b>Calculated MW:</b>	-

## Preparation & Storage

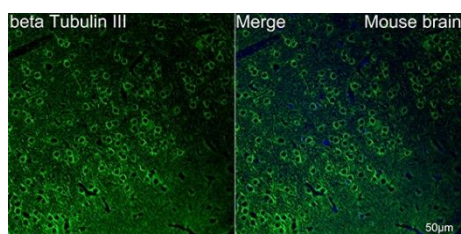
**Storage:** Store at -20°C. Avoid freeze / thaw cycles. Buffer: PBS with 0.025% Sodium Azide, 0.75% BSA, 50% glycerol, pH 7.3.  
Store Bradford Reagent at Room Temperature for 1 Year.

**Positive Sample:** -

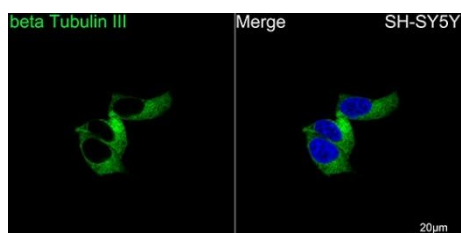
<b>Recommended Dilutions:</b>	<b>IF/ICC</b>	1:100 - 1:500
	<b>IF-P</b>	1:100 - 1:500
	<b>FC</b>	1:50 - 1:200

**Protein Quantification (Optional):** To quantify total protein levels, use the Bradford Reagent included in this kit. Visit <https://www.assaygenie.com/bradford-protein-assay-protocol/> to view the full protocol

## Validation Data



Confocal imaging of paraffin-embedded Mouse brain using  $\beta$ III-Tubulin Rabbit mAb (CAB17913, dilution 1:200) followed by a further incubation with FITC F(ab')<sub>2</sub> Fragment Goat Anti-Rabbit IgG, Fc fragment specific (CABS083, dilution 1:500) (Green). DAPI was used for nuclear staining (Blue). Objective: 40x. Perform high pressure antigen retrieval with 0.01M citrate buffer (pH 6.0) prior to IF staining.



Confocal imaging of SH-SY5Y cells using  $\beta$ III-Tubulin Rabbit mAb (CAB17913, dilution 1:200) followed by a further incubation with FITC F(ab')<sub>2</sub> Fragment Goat Anti-Rabbit IgG, Fc fragment specific (CABS083, dilution 1:500) (Green). DAPI was used for nuclear staining (Blue). Objective: 100x.