

## Goat Anti-Human IgG (H+L)

CABS084

### Description

---

This Goat Anti-Human IgG (H+L) is supplied as a kit for advanced applications. The kit includes Bradford Reagent to quantify total protein concentration for accurate sample normalization (Optional).

### Product Information

---

<b>SKU:</b>	CABS084
<b>Contents:</b>	20 µL, 100 µL Bradford Reagent: 1 vial (2ml)
<b>Category:</b>	
<b>Synonyms:</b>	-
<b>Clone:</b>	-
<b>Applications:</b>	<span style="background-color: #f08080; padding: 2px;">WB</span>
<b>Conjugation:</b>	Unconjugated
<b>Reactivity:</b>	Human

### Antibody Data

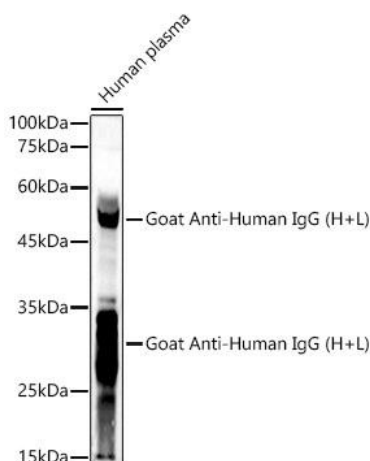
---

<b>Gene ID:</b>	-
<b>Uniprot:</b>	-
<b>Host Species:</b>	Human
<b>Purification:</b>	Affinity purification
<b>Observed MW:</b>	25kDa(Light chain),55kDa(Heavy chain)
<b>Calculated MW:</b>	-

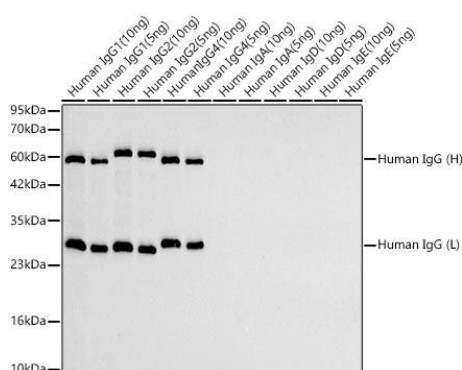
## Preparation & Storage

<b>Storage:</b>	Store at -20°C. Avoid freeze / thaw cycles. Buffer: PBS with 0.09% Sodium azide, 50% glycerol, pH 7.3. Store Bradford Reagent at Room Temperature for 1 Year.
<b>Positive Sample:</b>	Human IgG1, Human IgG2, Human IgG4
<b>Recommended Dilutions:</b>	N/A
<b>Protein Quantification (Optional):</b>	To quantify total protein levels, use the Bradford Reagent included in this kit. Visit <a href="https://www.assaygenie.com/bradford-protein-assay-protocol/">https://www.assaygenie.com/bradford-protein-assay-protocol/</a> to view the full protocol

## Validation Data



Western blot analysis of lysates from Human plasma, using Goat Anti-Human IgG (H+L) (CABS084) at 1:1000 dilution. Secondary antibody: HRP Donkey Anti-Goat IgG (H+L) (CABS031) at 1:4000 dilution. Lysates/proteins: 25µg per lane. Blocking buffer: 3% nonfat dry milk in TBST. Detection: ECL Basic Kit (AbGn00020). Exposure time: 10s.



Western blot analysis of lysates from Human IgG using Goat Anti-Human IgG (H+L) (CABS002) at 1:5000 dilution. Lysates/proteins: 5ng - 10ng per lane. Blocking buffer: 3% nonfat dry milk in TBST. Detection: ECL Basic Kit (AbGn00020). Exposure time: 10s.