

TUBE1 Monoclonal Antibody

MACO0401

Description

This TUBE1 Monoclonal Antibody is supplied as a kit for advanced applications. The kit includes Bradford Reagent to quantify total protein concentration for accurate sample normalization (Optional).

Product Information

SKU:	MACO0401
Contents:	50µg Bradford Reagent: 1 vial (2ml)
Category:	Monoclonal Antibody
Synonyms:	dJ142L7.2 antibody, Epsilon-tubulin antibody, FLJ22589 antibody, FLJ44203 antibody, OTTHUMP00000040425 antibody, TBE_HUMAN antibody, TUBE 1 antibody, TUBE antibody, TUBE1 antibody, Tubulin epsilon 1 antibody, Tubulin epsilon antibody, Tubulin epsilon chain antibody
Clone:	-
Applications:	ELISA WB
Conjugation:	Non-conjugated
Reactivity:	Human, Mouse, Rat

Antibody Data

Isotype:	-
Uniprot:	Q9UJT0
Host Species:	Mouse
Purification:	The antibody was affinity-purified from mouse ascites by affinity-chromatography using specific immunogen.
Immunogen:	Synthetic Peptide of Epsilon Tubulin
Immunogen Species:	Homo sapiens (Human)
Buffer:	Liquid in PBS containing 50% glycerol, 0.5% BSA and 0.02% sodium azide.
Form:	Liquid

Manufacturers Statement: This final kit system is assembled and quality-released by Assay Genie Limited.

Preparation & Storage

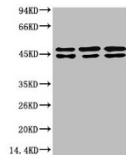
Storage: Upon receipt, store at -20°C or -80°C. Avoid repeated freeze.
Store Bradford Reagent at Room Temperature for 1 Year.

Recommended Dilutions:	Application	Recommended Dilution
	WB	1:500-1:5000

Protein Quantification (Optional): To quantify total protein levels, use the Bradford Reagent included in this kit. Visit <https://www.assaygenie.com/bradford-protein-assay-protocol/> to view the full protocol

Validation Data

Image



Description

Western blot analysis of 1) MCF7Cell Lysate, 2) Rat Brain Tissue Lysate, 3) Mouse Brain Tissue Lysate using Epsilon Tubulin Mouse mAb diluted at 1:2000.