

TUBE1 Monoclonal Antibody

MACO0407

Description

This TUBE1 Monoclonal Antibody is supplied as a kit for advanced applications. The kit includes Bradford Reagent to quantify total protein concentration for accurate sample normalization (Optional).

Product Information

SKU:	MACO0407
Contents:	50µg Bradford Reagent: 1 vial (2ml)
Category:	Monoclonal Antibody
Synonyms:	dJ142L7.2 antibody, Epsilon-tubulin antibody, FLJ22589 antibody, FLJ44203 antibody, OTTHUMP00000040425 antibody, TBE_HUMAN antibody, TUBE 1 antibody, TUBE antibody, TUBE1 antibody, Tubulin epsilon 1 antibody, Tubulin epsilon antibody, Tubulin epsilon chain antibody
Clone:	-
Applications:	ELISA IHC
Conjugation:	Non-conjugated
Reactivity:	Human, Mouse, Rat

Antibody Data

Isotype:	-
Uniprot:	Q9UJT0
Host Species:	Mouse
Purification:	The antibody was affinity-purified from mouse ascites by affinity-chromatography using specific immunogen.
Immunogen:	Synthetic Peptide of Epsilon Tubulin
Immunogen Species:	Homo sapiens (Human)
Buffer:	Liquid in PBS containing 50% glycerol, 0.5% BSA and 0.02% sodium azide.
Form:	Liquid

Manufacturers Statement: This final kit system is assembled and quality-released by Assay Genie Limited.

Preparation & Storage

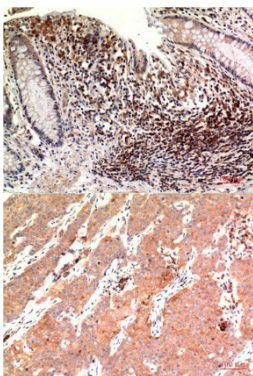
Storage: Upon receipt, store at -20°C or -80°C. Avoid repeated freeze.
Store Bradford Reagent at Room Temperature for 1 Year.

Recommended Dilutions:	Application	Recommended Dilution
	IHC	1:100-1:200

Protein Quantification (Optional): To quantify total protein levels, use the Bradford Reagent included in this kit. Visit <https://www.assaygenie.com/bradford-protein-assay-protocol/> to view the full protocol

Validation Data

Image



Description

Immunohistochemical analysis of paraffin-embedded Human Colon Carcinoma Tissue using Epsilon Tubulin Mouse mAb diluted at 1:200.

Immunohistochemical analysis of paraffin-embedded Human Breast Carcinoma Tissue using Epsilon Tubulin Mouse mAb diluted at 1:200.