

E2F4/E2F5 Antibody

PACO00732

Description

This E2F4/E2F5 Antibody is supplied as a kit for advanced applications. The kit includes Bradford Reagent to quantify total protein concentration for accurate sample normalization (Optional).

Product Information

SKU:	PACO00732
Contents:	50µg Bradford Reagent: 1 vial (2ml)
Category:	-
Synonyms:	-
Clone:	-
Applications:	WB IHC ELISA
Conjugation:	Non-conjugated
Reactivity:	Human, Mouse, Rat, Monkey

Antibody Data

Isotype:	IgG
Uniprot:	Q16254 Q15329
Host Species:	Rabbit
Purification:	The antibody was affinity-purified from rabbit antiserum by affinity-chromatography using epitope-specific immunogen.
Immunogen:	Synthesized peptide derived from the Internal region of Human E2F-4/5.
Immunogen Species:	Homo sapiens (Human)
Buffer:	Liquid in PBS containing 50% glycerol, 0.5% BSA and 0.02% sodium azide.
Form:	Liquid

Manufacturers Statement: This final kit system is assembled and quality-released by Assay Genie Limited.

Preparation & Storage

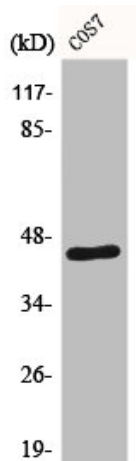
Storage: Upon receipt, store at -20°C or -80°C. Avoid repeated freeze.
Store Bradford Reagent at Room Temperature for 1 Year.

Recommended Dilutions:	Application	Recommended Dilution
	WB	1:500-1:2000
	IHC	1:100-1:300
	ELISA	1:40000

Protein Quantification (Optional): To quantify total protein levels, use the Bradford Reagent included in this kit. Visit <https://www.assaygenie.com/bradford-protein-assay-protocol/> to view the full protocol

Validation Data

Image



Description

Western Blot analysis of COS7 cells using E2F-4/5 Polyclonal Antibody