

CDKL1 Antibody

PACO01001

Description

This CDKL1 Antibody is supplied as a kit for advanced applications. The kit includes Bradford Reagent to quantify total protein concentration for accurate sample normalization (Optional).

Product Information

SKU:	PACO01001
Contents:	50µg Bradford Reagent: 1 vial (2ml)
Category:	-
Synonyms:	CDC 2 related kinase 1 antibody, CDC 2 related kinase antibody, CDC2 related kinase 1 antibody, CDC2 related kinase antibody, CDK L1 antibody, CDKL 1 antibody, cdkl1 antibody, CDKL1_HUMAN antibody, Cyclin dependent kinase like 1 antibody, cyclin-dependent kinase-like 1 (CDC2-related kinase) antibody, Cyclin-dependent kinase-like 1 antibody, EC 2.7.11.22 antibody, KKIALRE antibody, p42 antibody, Protein kinase p42 KKIALRE antibody, Serine/threonine protein kinase KKIALRE antibody, Serine/threonine-protein kinase KKIALRE antibody
Clone:	-
Applications:	WB IHC ELISA
Conjugation:	Non-conjugated
Reactivity:	Human,Rat

Antibody Data

Isotype:	IgG
Uniprot:	Q00532
Host Species:	Rabbit
Purification:	The antibody was affinity-purified from rabbit antiserum by affinity-chromatography using epitope-specific immunogen.
Immunogen:	Synthesized peptide derived from the C-terminal region of Human KKIALRE.
Immunogen Species:	Homo sapiens (Human)

Manufacturers Statement: This final kit system is assembled and quality-released by Assay Genie Limited.

Buffer: Liquid in PBS containing 50% glycerol, 0.5% BSA and 0.02% sodium azide.

Form: Liquid

Preparation & Storage

Storage: Upon receipt, store at -20°C or -80°C. Avoid repeated freeze.
Store Bradford Reagent at Room Temperature for 1 Year.

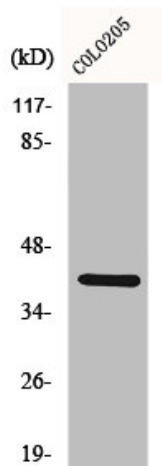
Recommended Dilutions:

Application	Recommended Dilution
WB	1:500-1:2000
IHC	1:100-1:300
ELISA	1:10000

Protein Quantification (Optional): To quantify total protein levels, use the Bradford Reagent included in this kit. Visit <https://www.assaygenie.com/bradford-protein-assay-protocol/> to view the full protocol

Validation Data

Image



Description

Western Blot analysis of COLO205 cells using KKIALRE Polyclonal Antibody