

## OR4P4 Antibody

PACO01236

### Description

---

This OR4P4 Antibody is supplied as a kit for advanced applications. The kit includes Bradford Reagent to quantify total protein concentration for accurate sample normalization (Optional).

### Product Information

---

|                      |   |
|----------------------|---|
| <b>SKU:</b>          | PACO01236   |
| <b>Contents:</b>     | 50µg<br>Bradford Reagent: 1 vial (2ml)                        |
| <b>Category:</b>     | -   |
| <b>Synonyms:</b>     | OR4P4, OR4P3P, Olfactory receptor 4P4, Olfactory receptor 4P3 |
| <b>Clone:</b>        | -   |
| <b>Applications:</b> | <b>WB</b> <b>IF</b> <b>ELISA</b>                              |
| <b>Conjugation:</b>  | Non-conjugated  |
| <b>Reactivity:</b>   | Human   |

### Antibody Data

---

|                           |   |
|---------------------------|---|
| <b>Isotype:</b>           | IgG   |
| <b>Uniprot:</b>           | Q8NGL7  |
| <b>Host Species:</b>      | Rabbit  |
| <b>Purification:</b>      | The antibody was affinity-purified from rabbit antiserum by affinity-chromatography using epitope-specific immunogen. |
| <b>Immunogen:</b>         | Synthesized peptide derived from the C-terminal region of Human Olfactory receptor 4P4.                               |
| <b>Immunogen Species:</b> | Homo sapiens (Human)  |
| <b>Buffer:</b>            | Liquid in PBS containing 50% glycerol, 0.5% BSA and 0.02% sodium azide.   |
| <b>Form:</b>              | Liquid  |

## Preparation & Storage

---

**Storage:** Upon receipt, store at -20°C or -80°C. Avoid repeated freeze.  
Store Bradford Reagent at Room Temperature for 1 Year.

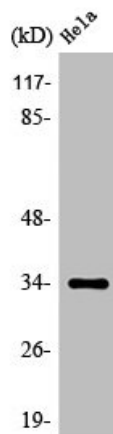
| Recommended Dilutions: | Application | Recommended Dilution |
|------------------------|-------------|----------------------|
|                        | WB          | 1:500-1:2000         |
|                        | IF          | 1:200-1:1000         |
|                        | ELISA       | 1:20000              |

**Protein Quantification (Optional):** To quantify total protein levels, use the Bradford Reagent included in this kit. Visit <https://www.assaygenie.com/bradford-protein-assay-protocol/> to view the full protocol

## Validation Data

---

### Image



### Description

Western Blot analysis of HeLa cells using Olfactory receptor 4P4 Polyclonal Antibody