

FGF11 Antibody

PACO02213

Description

This FGF11 Antibody is supplied as a kit for advanced applications. The kit includes Bradford Reagent to quantify total protein concentration for accurate sample normalization (Optional).

Product Information

| | |
|----------------------|------------------------------------------------------------------------------------------------------------------------------------------------------------------------------------------------------------------------------------------------------------------------------|
| SKU: | PACO02213 |
| Contents: | 50µg Bradford Reagent: 1 vial (2ml) |
| Category: | - |
| Synonyms: | FGF 11 antibody, FGF-11 antibody, FGF11 antibody, FGF11_HUMAN antibody, FHF 3 antibody, FHF-3 antibody, FHF3 antibody, Fibroblast growth factor 11 antibody, Fibroblast growth factor homologous factor 3 antibody, FLJ16061 antibody, MGC102953 antibody, MGC45269 antibody |
| Clone: | - |
| Applications: | WB ELISA |
| Conjugation: | Non-conjugated |
| Reactivity: | Human, Mouse, Rat |

Antibody Data

| | |
|---------------------------|-----------------------------------------------------------------------------------------------------------------------|
| Isotype: | IgG |
| Uniprot: | Q92914 |
| Host Species: | Rabbit |
| Purification: | The antibody was affinity-purified from rabbit antiserum by affinity-chromatography using epitope-specific immunogen. |
| Immunogen: | Synthesized peptide derived from the Internal region of Human FGF-11. |
| Immunogen Species: | Homo sapiens (Human) |
| Buffer: | Liquid in PBS containing 50% glycerol, 0.5% BSA and 0.02% sodium azide. |
| Form: | Liquid |

Preparation & Storage

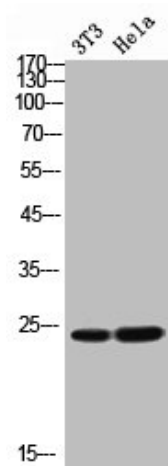
Storage: Upon receipt, store at -20°C or -80°C. Avoid repeated freeze.
Store Bradford Reagent at Room Temperature for 1 Year.

| Recommended Dilutions: | Application | Recommended Dilution |
|------------------------|-------------|----------------------|
| | WB | 1:500-1:2000 |
| | ELISA | 1:10000 |

Protein Quantification (Optional): To quantify total protein levels, use the Bradford Reagent included in this kit. Visit <https://www.assaygenie.com/bradford-protein-assay-protocol/> to view the full protocol

Validation Data

Image



Description

Western Blot analysis of NIH-3T3 HeLa cells using FGF-11 Polyclonal Antibody