

ATXN2L Antibody

PACO02416

Description

This ATXN2L Antibody is supplied as a kit for advanced applications. The kit includes Bradford Reagent to quantify total protein concentration for accurate sample normalization (Optional).

Product Information

SKU:	PACO02416
Contents:	50µg Bradford Reagent: 1 vial (2ml)
Category:	-
Synonyms:	A2D antibody, A2LG antibody, A2LP antibody, A2RP antibody, Ataxin 2 domain protein antibody, Ataxin 2 like antibody, Ataxin 2 like protein antibody, Ataxin 2 related protein antibody, Ataxin-2 domain protein antibody, Ataxin-2 like antibody, Ataxin-2-like protein antibody, Ataxin-2-related protein antibody, ATX2L_HUMAN antibody, ATXN2L antibody, ATXN2L ataxin 2 like antibody
Clone:	-
Applications:	WB ELISA
Conjugation:	Non-conjugated
Reactivity:	Human

Antibody Data

Isotype:	IgG
Uniprot:	Q8WWM7
Host Species:	Rabbit
Purification:	The antibody was affinity-purified from rabbit antiserum by affinity-chromatography using epitope-specific immunogen.
Immunogen:	Synthesized peptide derived from the Internal region of Human Ataxin-2L.
Immunogen Species:	Homo sapiens (Human)
Buffer:	Liquid in PBS containing 50% glycerol, 0.5% BSA and 0.02% sodium azide.
Form:	Liquid

Manufacturers Statement: This final kit system is assembled and quality-released by Assay Genie Limited.

Preparation & Storage

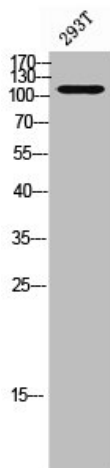
Storage: Upon receipt, store at -20°C or -80°C. Avoid repeated freeze.
Store Bradford Reagent at Room Temperature for 1 Year.

Recommended Dilutions:	Application	Recommended Dilution
	WB	1:500-1:2000
	ELISA	1:20000

Protein Quantification (Optional): To quantify total protein levels, use the Bradford Reagent included in this kit. Visit <https://www.assaygenie.com/bradford-protein-assay-protocol/> to view the full protocol

Validation Data

Image



Description

Western Blot analysis of 293T cells using Ataxin-2L Polyclonal Antibody