

## HNRNPUL2 Antibody

PACO02704

### Description

---

This HNRNPUL2 Antibody is supplied as a kit for advanced applications. The kit includes Bradford Reagent to quantify total protein concentration for accurate sample normalization (Optional).

### Product Information

---

<b>SKU:</b>	PACO02704
<b>Contents:</b>	50µg Bradford Reagent: 1 vial (2ml)
<b>Category:</b>	-
<b>Synonyms:</b>	DKFZp762N1910 antibody, Heterogeneous nuclear ribonucleoprotein U like 2 antibody, Heterogeneous nuclear ribonucleoprotein U like protein 2 antibody, Heterogeneous nuclear ribonucleoprotein U-like protein 2 antibody, HNRL2_HUMAN antibody, HNRNPUL 2 antibody, HNRNPUL2 antibody, HNRNPUL2 antibody, OTTHUMP00000236813 antibody, SAF A2 antibody, SAF-A2 antibody, Scaffold attachment factor A2 antibody, Scaffold-attachment factor A2 antibody
<b>Clone:</b>	-
<b>Applications:</b>	<b>WB</b> <b>IHC</b> <b>ELISA</b>
<b>Conjugation:</b>	Non-conjugated
<b>Reactivity:</b>	Human, Mouse

### Antibody Data

---

<b>Isotype:</b>	IgG
<b>Uniprot:</b>	Q1KMD3
<b>Host Species:</b>	Rabbit
<b>Purification:</b>	The antibody was affinity-purified from rabbit antiserum by affinity-chromatography using epitope-specific immunogen.
<b>Immunogen:</b>	Synthesized peptide derived from the C-terminal region of Human SAF-A2.
<b>Immunogen Species:</b>	Homo sapiens (Human)
<b>Buffer:</b>	Liquid in PBS containing 50% glycerol, 0.5% BSA and 0.02% sodium azide.

**Manufacturers Statement:** This final kit system is assembled and quality-released by Assay Genie Limited.

**Form:** Liquid

## Preparation & Storage

**Storage:** Upon receipt, store at -20°C or -80°C. Avoid repeated freeze.  
Store Bradford Reagent at Room Temperature for 1 Year.

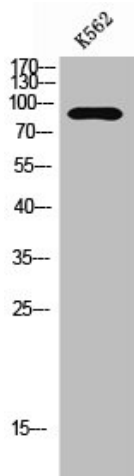
**Recommended Dilutions:**

Application	Recommended Dilution
WB	1:500-1:2000
IHC	1:100-1:300
ELISA	1:40000

**Protein Quantification (Optional):** To quantify total protein levels, use the Bradford Reagent included in this kit. Visit <https://www.assaygenie.com/bradford-protein-assay-protocol/> to view the full protocol

## Validation Data

**Image**



**Description**

Western Blot analysis of K562 cells using SAF-A2 Polyclonal Antibody