

## KLF1/KLF5/KLF7 Antibody

PACO06456

### Description

---

This KLF1/KLF5/KLF7 Antibody is supplied as a kit for advanced applications. The kit includes Bradford Reagent to quantify total protein concentration for accurate sample normalization (Optional).

### Product Information

---

|                      |  |
|----------------------|--|
| <b>SKU:</b>          | PACO06456                              |
| <b>Contents:</b>     | 50µg<br>Bradford Reagent: 1 vial (2ml) |
| <b>Category:</b>     | -                                      |
| <b>Synonyms:</b>     | -                                      |
| <b>Clone:</b>        | -                                      |
| <b>Applications:</b> | <b>WB IF ELISA</b>                     |
| <b>Conjugation:</b>  | Non-conjugated                         |
| <b>Reactivity:</b>   | Human, Mouse, Rat                      |

### Antibody Data

---

|                           |   |
|---------------------------|---|
| <b>Isotype:</b>           | IgG   |
| <b>Uniprot:</b>           | Q13351 Q13887 O75840  |
| <b>Host Species:</b>      | Rabbit  |
| <b>Purification:</b>      | The antibody was affinity-purified from rabbit antiserum by affinity-chromatography using epitope-specific immunogen. |
| <b>Immunogen:</b>         | Synthesized peptide derived from the C-terminal region of Human EKLF/CKLF/UKLF.                                       |
| <b>Immunogen Species:</b> | Homo sapiens (Human)  |
| <b>Buffer:</b>            | Liquid in PBS containing 50% glycerol, 0.5% BSA and 0.02% sodium azide.   |
| <b>Form:</b>              | Liquid  |

**Manufacturers Statement:** This final kit system is assembled and quality-released by Assay Genie Limited.

## Preparation & Storage

**Storage:** Upon receipt, store at -20°C or -80°C. Avoid repeated freeze.  
Store Bradford Reagent at Room Temperature for 1 Year.

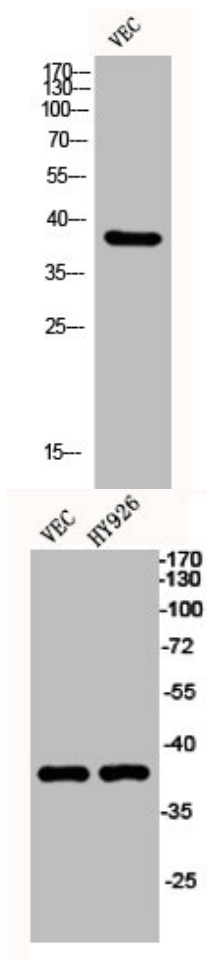
**Recommended Dilutions:**

| Application | Recommended Dilution |
|-------------|----------------------|
| WB          | 1:500-1:2000         |
| IF          | 1:200-1:1000         |
| ELISA       | 1:20000              |

**Protein Quantification (Optional):** To quantify total protein levels, use the Bradford Reagent included in this kit. Visit <https://www.assaygenie.com/bradford-protein-assay-protocol/> to view the full protocol

## Validation Data

**Image**



**Description**

Western Blot analysis of VEC cells using EKLF/CKLF/UKLF Polyclonal Antibody

Western Blot analysis of VEC HY926 cells using EKLF/CKLF/UKLF Polyclonal Antibody