

## OR1S2/OR1S1 Antibody

PACO06710

### Description

---

This OR1S2/OR1S1 Antibody is supplied as a kit for advanced applications. The kit includes Bradford Reagent to quantify total protein concentration for accurate sample normalization (Optional).

### Product Information

---

<b>SKU:</b>	PACO06710
<b>Contents:</b>	50µg Bradford Reagent: 1 vial (2ml)
<b>Category:</b>	-
<b>Synonyms:</b>	-
<b>Clone:</b>	-
<b>Applications:</b>	<b>WB IF ELISA</b>
<b>Conjugation:</b>	Non-conjugated
<b>Reactivity:</b>	Human

### Antibody Data

---

<b>Isotype:</b>	IgG
<b>Uniprot:</b>	Q8NGQ3 Q8NH92
<b>Host Species:</b>	Rabbit
<b>Purification:</b>	The antibody was affinity-purified from rabbit antiserum by affinity-chromatography using epitope-specific immunogen.
<b>Immunogen:</b>	Synthesized peptide derived from the C-terminal region of Human Olfactory receptor 1S1/2.
<b>Immunogen Species:</b>	Homo sapiens (Human)
<b>Buffer:</b>	Liquid in PBS containing 50% glycerol, 0.5% BSA and 0.02% sodium azide.
<b>Form:</b>	Liquid

**Manufacturers Statement:** This final kit system is assembled and quality-released by Assay Genie Limited.

## Preparation & Storage

**Storage:** Upon receipt, store at -20°C or -80°C. Avoid repeated freeze.  
Store Bradford Reagent at Room Temperature for 1 Year.

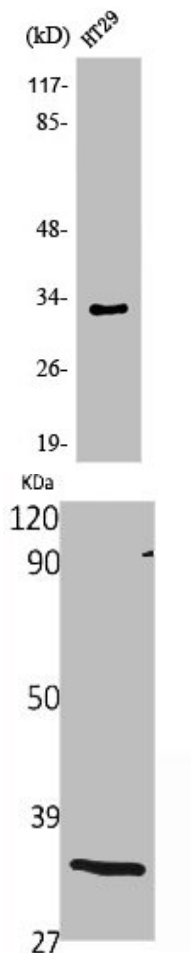
**Recommended Dilutions:**

Application	Recommended Dilution
WB	1:500-1:2000
IF	1:200-1:1000
ELISA	1:20000

**Protein Quantification (Optional):** To quantify total protein levels, use the Bradford Reagent included in this kit. Visit <https://www.assaygenie.com/bradford-protein-assay-protocol/> to view the full protocol

## Validation Data

**Image**



**Description**

Western Blot analysis of HuvEc cells using Olfactory receptor 1S1/2 Polyclonal Antibody

Western Blot analysis of various cells using Olfactory receptor 1S1/2 Polyclonal Antibody