

PTGFRN Antibody

PACO06919

Description

This PTGFRN Antibody is supplied as a kit for advanced applications. The kit includes Bradford Reagent to quantify total protein concentration for accurate sample normalization (Optional).

Product Information

SKU:	PACO06919
Contents:	50µg Bradford Reagent: 1 vial (2ml)
Category:	-
Synonyms:	CD315 antibody, CD9 partner 1 antibody, CD9P-1 antibody, CD9P1 antibody, EWI F antibody, EWI-F antibody, FLJ11001 antibody, FPRP antibody, FPRP_HUMAN antibody, Glu Trp Ile EWI motif containing protein F antibody, Glu-Trp-Ile EWI motif-containing protein F antibody, KIAA1436 antibody, Prostaglandin F2 alpha receptor associated protein antibody, Prostaglandin F2 alpha receptor regulatory protein antibody, Prostaglandin F2 receptor inhibitor antibody, Prostaglandin F2 receptor negative regulator antibody, Prostaglandin F2-alpha receptor regulatory protein antibody, Prostaglandin F2-alpha receptor...Read more
Clone:	-
Applications:	WB ELISA
Conjugation:	Non-conjugated
Reactivity:	Human, Mouse, Rat

Antibody Data

Isotype:	IgG
Uniprot:	Q9P2B2
Host Species:	Rabbit
Purification:	The antibody was affinity-purified from rabbit antiserum by affinity-chromatography using epitope-specific immunogen.
Immunogen:	Synthesized peptide derived from the Internal region of Human CD315.
Immunogen Species:	Homo sapiens (Human)

Manufacturers Statement: This final kit system is assembled and quality-released by Assay Genie Limited.

Buffer: Liquid in PBS containing 50% glycerol, 0.5% BSA and 0.02% sodium azide.

Form: Liquid

Preparation & Storage

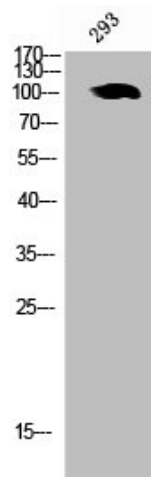
Storage: Upon receipt, store at -20°C or -80°C. Avoid repeated freeze.
Store Bradford Reagent at Room Temperature for 1 Year.

Recommended Dilutions:	Application	Recommended Dilution
	WB	1:500-1:2000
	ELISA	1:10000

Protein Quantification (Optional): To quantify total protein levels, use the Bradford Reagent included in this kit. Visit <https://www.assaygenie.com/bradford-protein-assay-protocol/> to view the full protocol

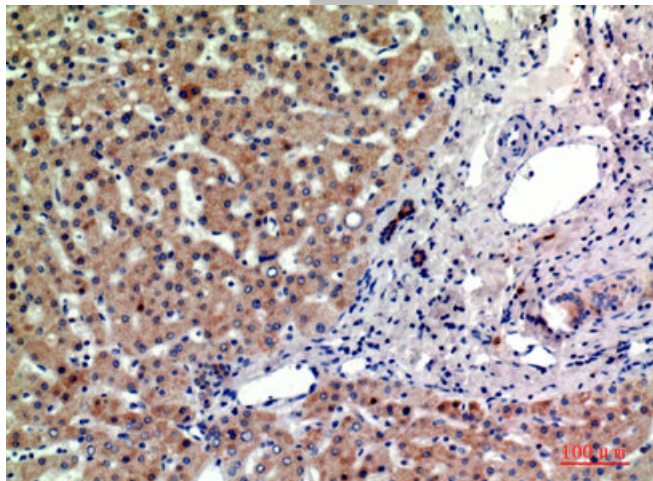
Validation Data

Image



Description

Western Blot analysis of 293 cells using CD315 Polyclonal Antibody



Immunohistochemical analysis of paraffin-embedded human-liver, antibody was diluted at 1:200