

BEST2 Antibody

PACO07013

Description

This BEST2 Antibody is supplied as a kit for advanced applications. The kit includes Bradford Reagent to quantify total protein concentration for accurate sample normalization (Optional).

Product Information

SKU:	PACO07013
Contents:	50µg Bradford Reagent: 1 vial (2ml)
Category:	-
Synonyms:	BEST2, VMD2L1, Bestrophin-2, Vitelliform macular dystrophy 2-like protein 1
Clone:	-
Applications:	WB IHC
Conjugation:	Non-conjugated
Reactivity:	Mouse,Rat

Antibody Data

Isotype:	IgG
Uniprot:	Q8NFU1
Host Species:	Rabbit
Purification:	-
Immunogen:	Synthetic Peptide
Immunogen Species:	Homo sapiens (Human)
Buffer:	PBS, pH 7.4, containing 0.5%BSA, 0.02% sodium azide as Preservative and 50% Glycerol.
Form:	Liquid

Manufacturers Statement: This final kit system is assembled and quality-released by Assay Genie Limited.

Preparation & Storage

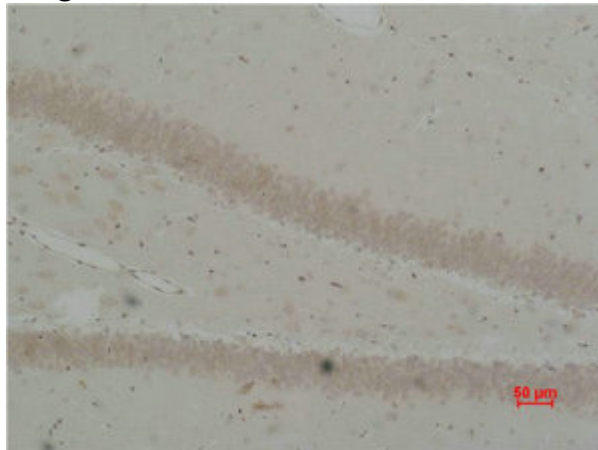
Storage: Upon receipt, store at -20°C or -80°C. Avoid repeated freeze.
Store Bradford Reagent at Room Temperature for 1 Year.

Recommended Dilutions:	Application	Recommended Dilution
	WB	1:500-1000
	IHC	1:200-500

Protein Quantification (Optional): To quantify total protein levels, use the Bradford Reagent included in this kit. Visit <https://www.assaygenie.com/bradford-protein-assay-protocol/> to view the full protocol

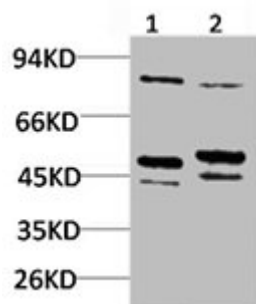
Validation Data

Image



Description

Immunohistochemical analysis of paraffin-embedded Rat Brain Tissue using BEST2 Polyclonal Antibody.



Western blot analysis of 1) Mouse Brain Tissue, 2) Rat Brain Tissue using BEST2 Polyclonal Antibody.