

## COL28A1 Antibody

PACO07271

### Description

---

This COL28A1 Antibody is supplied as a kit for advanced applications. The kit includes Bradford Reagent to quantify total protein concentration for accurate sample normalization (Optional).

### Product Information

---

<b>SKU:</b>	PACO07271
<b>Contents:</b>	50µg Bradford Reagent: 1 vial (2ml)
<b>Category:</b>	-
<b>Synonyms:</b>	COL28 antibody, Col28a1 antibody, Collagen alpha-1(XXVIII) chain antibody, Collagen, type XXVIII alpha 1 antibody, COSA1_HUMAN antibody
<b>Clone:</b>	-
<b>Applications:</b>	<b>WB</b> <b>ELISA</b>
<b>Conjugation:</b>	Non-conjugated
<b>Reactivity:</b>	Human, Mouse

### Antibody Data

---

<b>Isotype:</b>	-
<b>Uniprot:</b>	Q2UY09
<b>Host Species:</b>	Rabbit
<b>Purification:</b>	The antibody was affinity-purified from rabbit antiserum by affinity-chromatography using epitope-specific immunogen.
<b>Immunogen:</b>	Synthesized peptide derived from Collagen alpha-1(XXVIII) Polyclonal Antibody at AA range: 111-160
<b>Immunogen Species:</b>	Homo sapiens (Human)
<b>Buffer:</b>	Liquid in PBS containing 50% glycerol, 0.5% BSA and 0.02% sodium azide.
<b>Form:</b>	Liquid

**Manufacturers Statement:** This final kit system is assembled and quality-released by Assay Genie Limited.

## Preparation & Storage

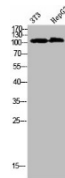
**Storage:** Upon receipt, store at -20°C or -80°C. Avoid repeated freeze.  
Store Bradford Reagent at Room Temperature for 1 Year.

Recommended Dilutions:	Application	Recommended Dilution
	WB	1:500-2000
	ELISA	1:10000-20000

**Protein Quantification (Optional):** To quantify total protein levels, use the Bradford Reagent included in this kit. Visit <https://www.assaygenie.com/bradford-protein-assay-protocol/> to view the full protocol

## Validation Data

### Image



### Description

Western Blot analysis of 3T3 HEPG2 cells using Collagen alpha-1(XXVIII) Polyclonal Antibody diluted at 1:1000. Secondary antibody was diluted at 1:20000