

KMT2A Antibody

PACO07353

Description

This KMT2A Antibody is supplied as a kit for advanced applications. The kit includes Bradford Reagent to quantify total protein concentration for accurate sample normalization (Optional).

Product Information

SKU:	PACO07353
Contents:	50µg Bradford Reagent: 1 vial (2ml)
Category:	-
Synonyms:	ALL-1 antibody, ALL1 antibody, C-terminal cleavage product of 180 kDa antibody, CXXC-type zinc finger protein 7 antibody, CXXC7 antibody, HRX antibody, HTRX1 antibody, KMT2A antibody, Lysine N-methyltransferase 2A antibody, Mll antibody, MLL cleavage product C180 antibody, MLL1 antibody, MLL1_HUMAN antibody, MLL1A antibody, N-terminal cleavage product of 320 kDa antibody, p180 antibody, p320 antibody, Trithorax-like protein antibody, TRX1 antibody, Zinc finger protein HRX antibody
Clone:	-
Applications:	IHC ELISA
Conjugation:	Non-conjugated
Reactivity:	Human, Mouse, Rat

Antibody Data

Isotype:	-
Uniprot:	Q03164
Host Species:	Rabbit
Purification:	The antibody was affinity-purified from rabbit serum by affinity-chromatography using specific immunogen.
Immunogen:	Synthetic peptide from Human protein at AA range: 3850-3900
Immunogen Species:	Homo sapiens (Human)
Buffer:	Liquid in PBS containing 50% glycerol, 0.5% BSA and 0.02% sodium azide.

Manufacturers Statement: This final kit system is assembled and quality-released by Assay Genie Limited.

Form: Liquid

Preparation & Storage

Storage: Upon receipt, store at -20°C or -80°C. Avoid repeated freeze.

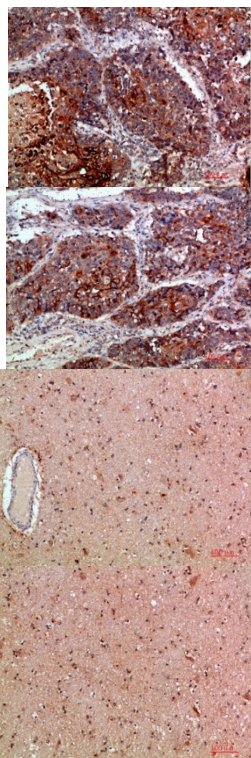
Store Bradford Reagent at Room Temperature for 1 Year.

Recommended Dilutions:	Application	Recommended Dilution
	IHC	1:50-300
	ELISA	1:10000-20000

Protein Quantification (Optional): To quantify total protein levels, use the Bradford Reagent included in this kit. Visit <https://www.assaygenie.com/bradford-protein-assay-protocol/> to view the full protocol

Validation Data

Image



Description

Immunohistochemical analysis of paraffin-embedded human-lung-cancer, antibody was diluted at 1:200

Immunohistochemical analysis of paraffin-embedded human-lung-cancer, antibody was diluted at 1:200

Immunohistochemical analysis of paraffin-embedded human-brain, antibody was diluted at 1:200

Immunohistochemical analysis of paraffin-embedded human-brain, antibody was diluted at 1:200